



**ELECTRONIC COPY**

LG795623093  
Report verification at igi.org



May 15, 2026  
IGI Report Number **LG795623093**  
Description **LABORATORY GROWN DIAMOND**  
Shape and Cutting Style **CUSHION MODIFIED BRILLIANT**  
Measurements **7.77 X 7.23 X 4.61 MM**  
**GRADING RESULTS**  
Carat Weight **2.52 CARATS**  
Color Grade **FANCY VIVID YELLOW**  
Clarity Grade **VS 2**

May 15, 2026  
IGI Report Number **LG795623093**  
Description **LABORATORY GROWN DIAMOND**  
Shape and Cutting Style **CUSHION MODIFIED BRILLIANT**  
Measurements **7.77 X 7.23 X 4.61 MM**

**GRADING RESULTS**

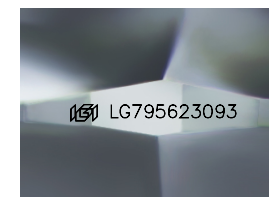
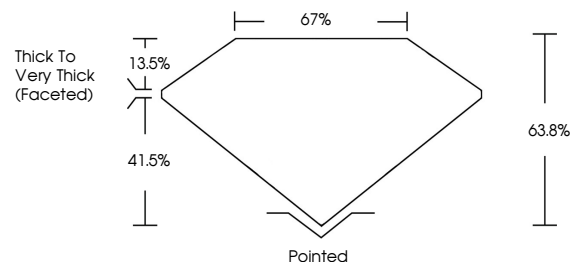
Carat Weight **2.52 CARATS**  
Color Grade **FANCY VIVID YELLOW**  
Clarity Grade **VS 2**

**ADDITIONAL GRADING INFORMATION**

Polish **EXCELLENT**  
Symmetry **EXCELLENT**  
Fluorescence **NONE**  
Inscription(s) **IGI LG795623093**

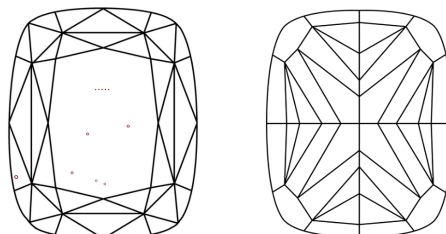
Comments: This Laboratory Grown Diamond was created by Chemical Vapor Deposition (CVD) growth process.

**PROPORTIONS**



Sample Image Used

**CLARITY CHARACTERISTICS**



**KEY TO SYMBOLS**

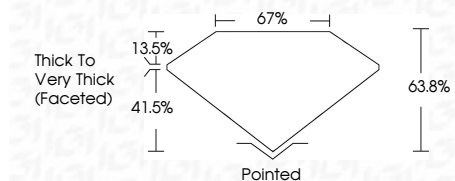
Red symbols indicate internal characteristics.  
Green symbols indicate external characteristics.

**COLOR**

D E F G H I J Faint Very Light Light

**CLARITY**

FL	IF	VS <sup>1-2</sup>	VS <sup>1-2</sup>	SI <sup>1-2</sup>	I <sup>1-3</sup>
Flawless	Internally Flawless	Very Very Slightly Included	Very Slightly Included	Slightly Included	Included



**ADDITIONAL GRADING INFORMATION**

Polish **EXCELLENT**  
Symmetry **EXCELLENT**  
Fluorescence **NONE**  
Inscription(s) **IGI LG795623093**  
Comments: This Laboratory Grown Diamond was created by Chemical Vapor Deposition (CVD) growth process.



May 15, 2026  
IGI Report No LG795623093  
CUSHION MODIFIED BRILLIANT  
2.52 CARATS  
FANCY VIVID YELLOW  
VS 2  
63.8%  
67%  
Thick to Very Thick (Faceted)  
Pointed  
EXCELLENT  
EXCELLENT  
NONE  
IGI LG795623093  
Comments: This Laboratory Grown Diamond was created by Chemical Vapor Deposition (CVD) growth process.