



**ELECTRONIC COPY**

LG795623060  
Report verification at igi.org



May 13, 2026  
IGI Report Number **LG795623060**  
Description **LABORATORY GROWN DIAMOND**  
Shape and Cutting Style **EMERALD CUT**  
Measurements **10.99 X 7.94 X 5.39 MM**  
**GRADING RESULTS**  
Carat Weight **5.00 CARATS**  
Color Grade **FANCY VIVID GREEN**  
Clarity Grade **VS 1**

May 13, 2026  
IGI Report Number **LG795623060**  
Description **LABORATORY GROWN DIAMOND**  
Shape and Cutting Style **EMERALD CUT**  
Measurements **10.99 X 7.94 X 5.39 MM**

**GRADING RESULTS**

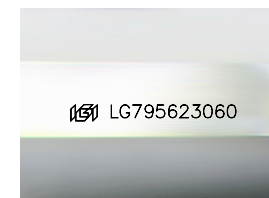
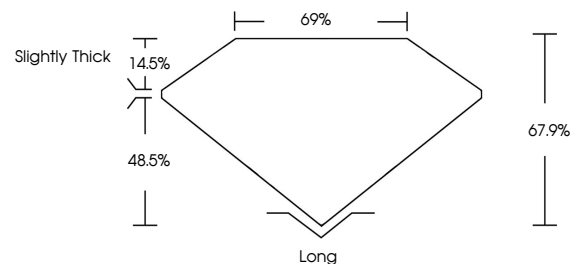
Carat Weight **5.00 CARATS**  
Color Grade **FANCY VIVID GREEN**  
Clarity Grade **VS 1**

**ADDITIONAL GRADING INFORMATION**

Polish **EXCELLENT**  
Symmetry **EXCELLENT**  
Fluorescence **NONE**  
Inscription(s) **IGI LG795623060**

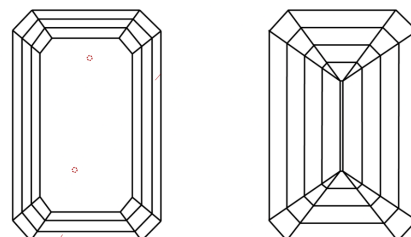
Comments: This Laboratory Grown Diamond was created by Chemical Vapor Deposition (CVD) growth process.  
Indications of post-growth treatment.

**PROPORTIONS**



Sample Image Used

**CLARITY CHARACTERISTICS**



**KEY TO SYMBOLS**

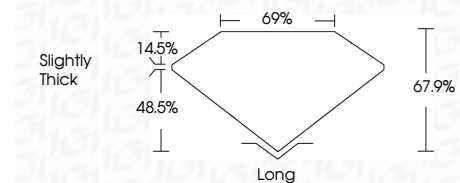
Red symbols indicate internal characteristics.  
Green symbols indicate external characteristics.

**COLOR**

D E F G H I J Faint Very Light Light

**CLARITY**

FL	IF	VS <sup>1-2</sup>	VS <sup>1-2</sup>	SI <sup>1-2</sup>	I <sup>1-3</sup>
Flawless	Internally Flawless	Very Very Slightly Included	Very Slightly Included	Slightly Included	Included



**ADDITIONAL GRADING INFORMATION**

Polish **EXCELLENT**  
Symmetry **EXCELLENT**  
Fluorescence **NONE**  
Inscription(s) **IGI LG795623060**  
Comments: This Laboratory Grown Diamond was created by Chemical Vapor Deposition (CVD) growth process.  
Indications of post-growth treatment.



**IGI**

May 13, 2026  
IGI Report No LG795623060  
EMERALD CUT  
5.00 CARATS  
FANCY VIVID GREEN  
VS 1  
67.9%  
69%  
Slightly Thick  
Long  
EXCELLENT  
EXCELLENT  
NONE  
IGI LG795623060  
Comments: This Laboratory Grown Diamond was created by Chemical Vapor Deposition (CVD) growth process.  
Indications of post-growth treatment.