



LABORATORY GROWN DIAMOND REPORT

May 14, 2026
 IGI Report Number **LG795623007**
 Description **LABORATORY GROWN DIAMOND**
 Shape and Cutting Style **HEART MODIFIED BRILLIANT**
 Measurements **4.83 X 5.55 X 2.94 MM**

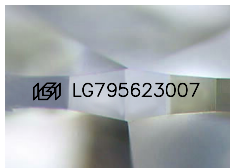
GRADING RESULTS

Carat Weight **0.63 CARAT**
 Color Grade **FANCY VIVID PINK**
 Clarity Grade **VS 1**

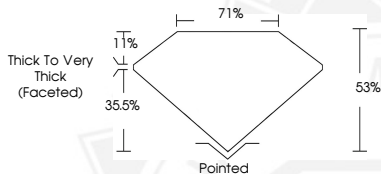
ADDITIONAL GRADING INFORMATION

Polish **VERY GOOD**
 Symmetry **VERY GOOD**
 Fluorescence **SLIGHT**
 Inscription(s) **IGI LG795623007**

Comments: This Laboratory Grown Diamond was created by Chemical Vapor Deposition (CVD) growth process. Indications of post-growth treatment.



Sample Image Used



May 14, 2026

IGI Report Number LG795623007
HEART MODIFIED BRILLIANT
LABORATORY GROWN DIAMOND
4.83 X 5.55 X 2.94 MM
 Carat Weight **0.63 CARAT**
 Color Grade **FANCY VIVID PINK**
 Clarity Grade **VS 1**
 Polish **VERY GOOD**
 Symmetry **VERY GOOD**
 Fluorescence **SLIGHT**
 Inscription(s) **IGI LG795623007**

Comments: This Laboratory Grown Diamond was created by Chemical Vapor Deposition (CVD) growth process. Indications of post-growth treatment.



May 14, 2026

IGI Report Number LG795623007
HEART MODIFIED BRILLIANT
LABORATORY GROWN DIAMOND
4.83 X 5.55 X 2.94 MM
 Carat Weight **0.63 CARAT**
 Color Grade **FANCY VIVID PINK**
 Clarity Grade **VS 1**
 Polish **VERY GOOD**
 Symmetry **VERY GOOD**
 Fluorescence **SLIGHT**
 Inscription(s) **IGI LG795623007**

Comments: This Laboratory Grown Diamond was created by Chemical Vapor Deposition (CVD) growth process. Indications of post-growth treatment.



THIS DOCUMENT WAS PRODUCED WITH THE FOLLOWING SECURITY MEASURES: SPECIAL DOCUMENT PAPER, INK SCREENS, WATERMARK, BACKGROUND DESIGNS, HOLOGRAM AND OTHER SECURITY FEATURES NOT LISTED AND DO EXCEED DOCUMENT SECURITY INDUSTRY GUIDELINES.