



**ELECTRONIC COPY**

LG795620060  
Report verification at igi.org



April 29, 2026  
IGI Report Number **LG795620060**  
Description **LABORATORY GROWN DIAMOND**  
Shape and Cutting Style **CUSHION MODIFIED BRILLIANT**  
Measurements **7.59 X 5.66 X 3.87 MM**  
**GRADING RESULTS**  
Carat Weight **1.48 CARAT**  
Color Grade **FANCY VIVID YELLOW**  
Clarity Grade **VVS 2**

**LABORATORY GROWN DIAMOND REPORT**

April 29, 2026  
IGI Report Number **LG795620060**  
Description **LABORATORY GROWN DIAMOND**  
Shape and Cutting Style **CUSHION MODIFIED BRILLIANT**  
Measurements **7.59 X 5.66 X 3.87 MM**

**GRADING RESULTS**

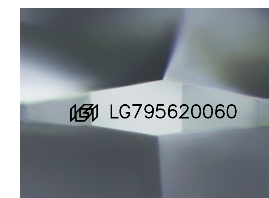
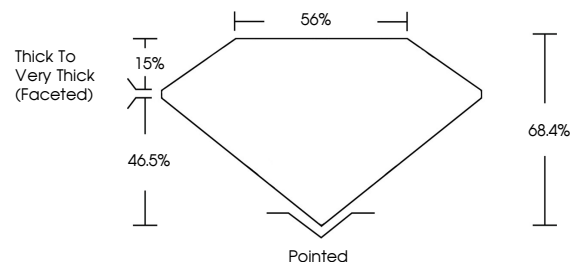
Carat Weight **1.48 CARAT**  
Color Grade **FANCY VIVID YELLOW**  
Clarity Grade **VVS 2**

**ADDITIONAL GRADING INFORMATION**

Polish **EXCELLENT**  
Symmetry **VERY GOOD**  
Fluorescence **NONE**  
Inscription(s) **IGI LG795620060**

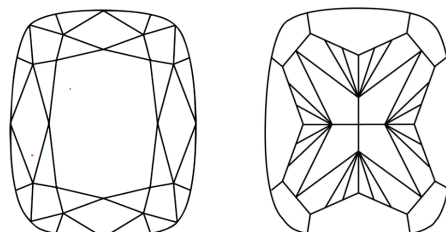
Comments: This Laboratory Grown Diamond was created by Chemical Vapor Deposition (CVD) growth process.

**PROPORTIONS**



Sample Image Used

**CLARITY CHARACTERISTICS**



**KEY TO SYMBOLS**

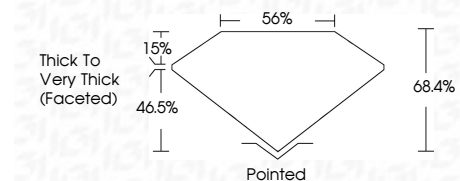
Red symbols indicate internal characteristics.  
Green symbols indicate external characteristics.

**COLOR**

D E F G H I J Faint Very Light Light

**CLARITY**

FL	IF	VVS <sup>1-2</sup>	VS <sup>1-2</sup>	SI <sup>1-2</sup>	I <sup>1-3</sup>
Flawless	Internally Flawless	Very Very Slightly Included	Very Slightly Included	Slightly Included	Included



**ADDITIONAL GRADING INFORMATION**

Polish **EXCELLENT**  
Symmetry **VERY GOOD**  
Fluorescence **NONE**  
Inscription(s) **IGI LG795620060**  
Comments: This Laboratory Grown Diamond was created by Chemical Vapor Deposition (CVD) growth process.



**IGI**



April 29, 2026  
IGI Report No LG795620060  
**CUSHION MODIFIED BRILLIANT**  
1.48 CARAT  
Carat Weight  
Color Grade **FANCY VIVID YELLOW**  
Clarity Grade **VVS 2**  
Depth **68.4%**  
Table **56%**  
Girdle  
Thick to Very Thick (Faceted)  
Culet Pointed  
Polish **EXCELLENT**  
Symmetry **VERY GOOD**  
Fluorescence **NONE**  
Inscription(s) **IGI LG795620060**  
Comments: This Laboratory Grown Diamond was created by Chemical Vapor Deposition (CVD) growth process.