



ELECTRONIC COPY

LG795620040
Report verification at igi.org



April 30, 2026

IGI Report Number **LG795620040**

Description **LABORATORY GROWN DIAMOND**

Shape and Cutting Style **CUT CORNERED
RECTANGULAR MODIFIED
BRILLIANT**

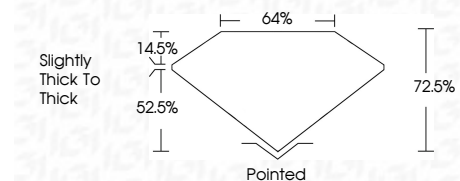
Measurements **8.21 X 5.67 X 4.11 MM**

GRADING RESULTS

Carat Weight **1.81 CARAT**

Color Grade **FANCY YELLOW**

Clarity Grade **VVS 2**



ADDITIONAL GRADING INFORMATION

Polish **EXCELLENT**

Symmetry **EXCELLENT**

Fluorescence **NONE**

Inscription(s) **IGI LG795620040**

Comments: This Laboratory Grown Diamond was created by Chemical Vapor Deposition (CVD) growth process.



April 30, 2026	IGI Report No LG795620040	CUT CORNERED RECT. MODIFIED BRILLIANT	1.81 CARAT	FANCY YELLOW	VVS 2	72.5%	52.5%	Slightly Thick To Thick	Pointed	EXCELLENT	EXCELLENT	NONE	IGI LG795620040
IGI	Carat Weight	Color Grade	Clarity Grade	Table	Depth	Graile	Culet	Polish	Symmetry	Fluorescence	Inscription(s)	Comments: This Laboratory Grown Diamond was created by Chemical Vapor Deposition (CVD) growth process.	

LABORATORY GROWN DIAMOND REPORT

April 30, 2026

IGI Report Number **LG795620040**

Description **LABORATORY GROWN DIAMOND**

Shape and Cutting Style **CUT CORNERED RECTANGULAR
MODIFIED BRILLIANT**

Measurements **8.21 X 5.67 X 4.11 MM**

GRADING RESULTS

Carat Weight **1.81 CARAT**

Color Grade **FANCY YELLOW**

Clarity Grade **VVS 2**

ADDITIONAL GRADING INFORMATION

Polish **EXCELLENT**

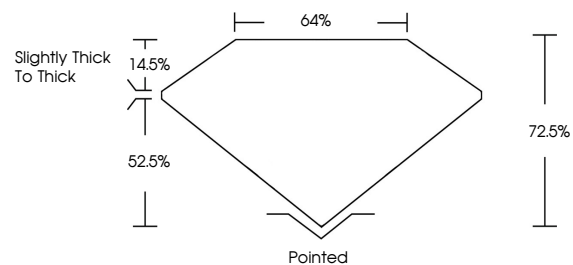
Symmetry **EXCELLENT**

Fluorescence **NONE**

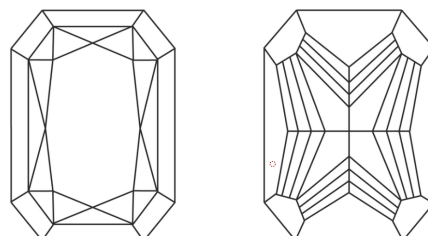
Inscription(s) **IGI LG795620040**

Comments: This Laboratory Grown Diamond was created by Chemical Vapor Deposition (CVD) growth process.

PROPORTIONS

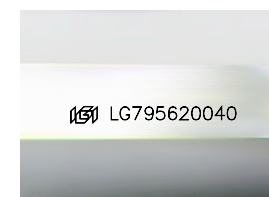


CLARITY CHARACTERISTICS



KEY TO SYMBOLS

Red symbols indicate internal characteristics.
Green symbols indicate external characteristics.



Sample Image Used

COLOR

D E F G H I J Faint Very Light Light

CLARITY

FL IF VVS¹⁻² VS¹⁻² SI¹⁻² I¹⁻³

Flawless Internally Flawless Very Very Slightly Included Very Slightly Included Slightly Included Included

