



ELECTRONIC COPY

LG795620010
Report verification at igi.org



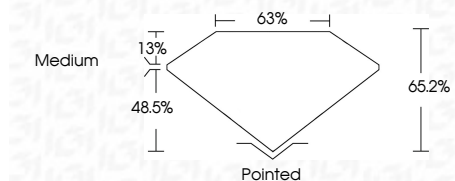
April 30, 2026
IGI Report Number **LG795620010**
Description **LABORATORY GROWN DIAMOND**

Shape and Cutting Style **CUT CORNERED
RECTANGULAR MODIFIED
BRILLIANT**

Measurements **11.61 X 7.74 X 5.05 MM**

GRADING RESULTS

Carat Weight **4.27 CARATS**
Color Grade **FANCY INTENSE PINK**
Clarity Grade **VVS 2**



ADDITIONAL GRADING INFORMATION

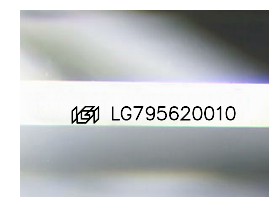
Polish **EXCELLENT**
Symmetry **EXCELLENT**
Fluorescence **SLIGHT**
Inscription(s) **IGI LG795620010**

Comments: This Laboratory Grown Diamond was created by Chemical Vapor Deposition (CVD) growth process. Indications of post-growth treatment.



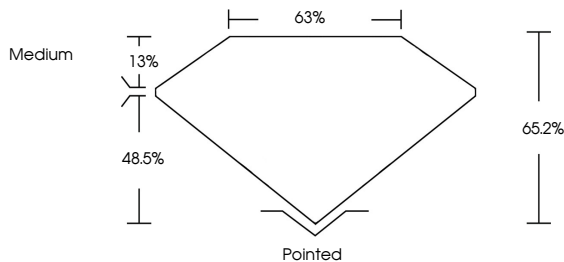
April 30, 2026
IGI Report No **LG795620010**
CUT CORNERED RECT. MODIFIED BRILLIANT
11.61 X 7.74 X 5.05 MM
4.27 CARATS
FANCY INTENSE PINK
VVS 2
65.2%
63%
Medium
Pointed
EXCELLENT
EXCELLENT
SLIGHT
IGI LG795620010

Comments: This Laboratory Grown Diamond was created by Chemical Vapor Deposition (CVD) growth process. Indications of post-growth treatment.

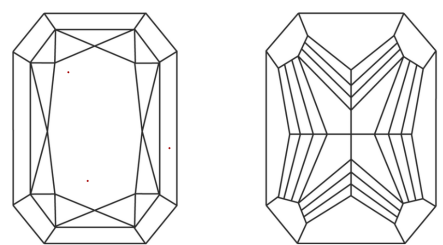


Sample Image Used

PROPORTIONS



CLARITY CHARACTERISTICS



KEY TO SYMBOLS

Red symbols indicate internal characteristics.
Green symbols indicate external characteristics.

COLOR

D E F G H I J Faint Very Light Light

CLARITY

FL	IF	VVS ¹⁻²	VS ¹⁻²	SI ¹⁻²	I ¹⁻³
Flawless	Internally Flawless	Very Very Slightly Included	Very Slightly Included	Slightly Included	Included

