



ELECTRONIC COPY

LG795619996
Report verification at igi.org



May 4, 2026
IGI Report Number **LG795619996**
Description **LABORATORY GROWN DIAMOND**
Shape and Cutting Style **CUT CORNERED
RECTANGULAR MODIFIED
BRILLIANT**
Measurements **11.14 X 7.80 X 5.09 MM**
GRADING RESULTS
Carat Weight **4.05 CARATS**
Color Grade **FANCY VIVID PINK**
Clarity Grade **VVS 2**

May 4, 2026
IGI Report Number **LG795619996**
Description **LABORATORY GROWN DIAMOND**
Shape and Cutting Style **CUT CORNERED RECTANGULAR
MODIFIED BRILLIANT**
Measurements **11.14 X 7.80 X 5.09 MM**

GRADING RESULTS

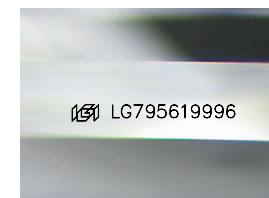
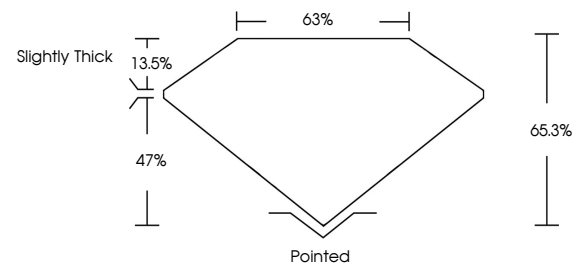
Carat Weight **4.05 CARATS**
Color Grade **FANCY VIVID PINK**
Clarity Grade **VVS 2**

ADDITIONAL GRADING INFORMATION

Polish **EXCELLENT**
Symmetry **VERY GOOD**
Fluorescence **SLIGHT**
Inscription(s) **IGI LG795619996**

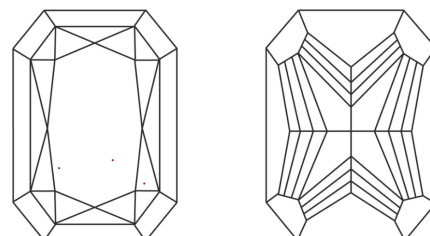
Comments: This Laboratory Grown Diamond was created by Chemical Vapor Deposition (CVD) growth process. Indications of post-growth treatment.

PROPORTIONS



Sample Image Used

CLARITY CHARACTERISTICS



KEY TO SYMBOLS

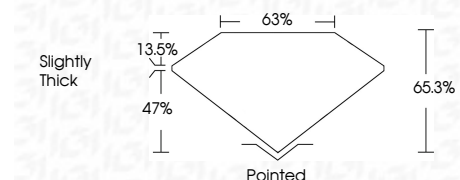
Red symbols indicate internal characteristics.
Green symbols indicate external characteristics.

COLOR

D E F G H I J Faint Very Light Light

CLARITY

FL	IF	VVS ¹⁻²	VS ¹⁻²	SI ¹⁻²	I ¹⁻³
Flawless	Internally Flawless	Very Very Slightly Included	Very Slightly Included	Slightly Included	Included



ADDITIONAL GRADING INFORMATION

Polish **EXCELLENT**
Symmetry **VERY GOOD**
Fluorescence **SLIGHT**
Inscription(s) **IGI LG795619996**
Comments: This Laboratory Grown Diamond was created by Chemical Vapor Deposition (CVD) growth process. Indications of post-growth treatment.



May 4, 2026
IGI Report No LG795619996
CUT CORNERED RECT. MODIFIED BRILLIANT
11.14 X 7.80 X 5.09 MM
4.05 CARATS
FANCY VIVID PINK
VVS 2
65.3%
63%
Slightly Thick
Pointed
EXCELLENT
VERY GOOD
SLIGHT
IGI LG795619996
Comments: This Laboratory Grown Diamond was created by Chemical Vapor Deposition (CVD) growth process. Indications of post-growth treatment.