



ELECTRONIC COPY

LG795619297
Report verification at igi.org



May 15, 2026

IGI Report Number **LG795619297**

Description **LABORATORY GROWN DIAMOND**

Shape and Cutting Style **ROUND BRILLIANT**

Measurements **10.14 - 10.17 X 6.34 MM**

GRADING RESULTS

Carat Weight **4.03 CARATS**

Color Grade **LIGHT BROWN**

Clarity Grade **VS 1**

Cut Grade **IDEAL**

May 15, 2026
IGI Report Number **LG795619297**
Description **LABORATORY GROWN DIAMOND**
Shape and Cutting Style **ROUND BRILLIANT**
Measurements **10.14 - 10.17 X 6.34 MM**

GRADING RESULTS

Carat Weight **4.03 CARATS**

Color Grade **LIGHT BROWN**

Clarity Grade **VS 1**

Cut Grade **IDEAL**

ADDITIONAL GRADING INFORMATION

Polish **EXCELLENT**

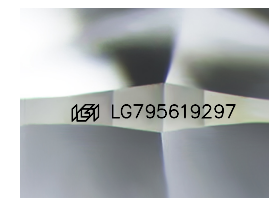
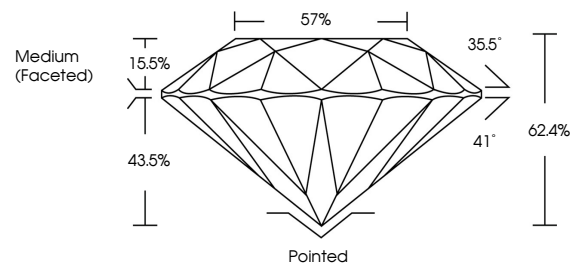
Symmetry **EXCELLENT**

Fluorescence **SLIGHT**

Inscription(s) **LG795619297**

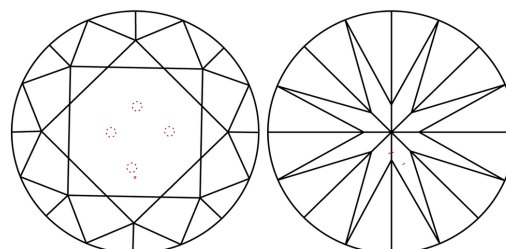
Comments: This Laboratory Grown Diamond was created by Chemical Vapor Deposition (CVD) growth process.
Indications of post-growth treatment.

PROPORTIONS



Sample Image Used

CLARITY CHARACTERISTICS



KEY TO SYMBOLS

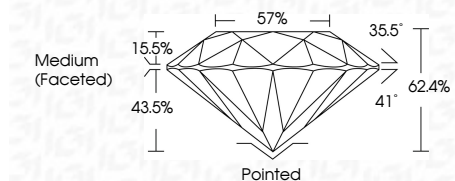
Red symbols indicate internal characteristics.
Green symbols indicate external characteristics.

COLOR

D E F G H I J Faint Very Light Light

CLARITY

FL	IF	VS ¹⁻²	VS ¹⁻²	SI ¹⁻²	I ¹⁻³
Flawless	Internally Flawless	Very Very Slightly Included	Very Slightly Included	Slightly Included	Included



ADDITIONAL GRADING INFORMATION

Polish **EXCELLENT**

Symmetry **EXCELLENT**

Fluorescence **SLIGHT**

Inscription(s) **LG795619297**

Comments: This Laboratory Grown Diamond was created by Chemical Vapor Deposition (CVD) growth process.
Indications of post-growth treatment.



May 15, 2026
IGI Report No LG795619297
ROUND BRILLIANT

4.03 CARATS
Carat Weight
LIGHT BROWN
Color Grade

VS 1
Clarity Grade
IDEAL
Cut Grade
62.4%
Depth
57%
Table
Medium (Faceted)
Girdle

Pointed
EXCELLENT
Polish
EXCELLENT
Symmetry
SLIGHT
Fluorescence
SLIGHT
Inscriptions(s)
IGI LG795619297

Comments: This Laboratory Grown Diamond was created by Chemical Vapor Deposition (CVD) growth process.
Indications of post-growth treatment.