



ELECTRONIC COPY

LG795619291
Report verification at igi.org



May 18, 2026

IGI Report Number **LG795619291**

Description **LABORATORY GROWN DIAMOND**

Shape and Cutting Style **ROUND BRILLIANT**

Measurements **10.06 - 10.15 X 6.18 MM**

GRADING RESULTS

Carat Weight **4.00 CARATS**

Color Grade **LIGHT BROWN**

Clarity Grade **VS 2**

Cut Grade **VERY GOOD**

May 18, 2026
IGI Report Number **LG795619291**
Description **LABORATORY GROWN DIAMOND**
Shape and Cutting Style **ROUND BRILLIANT**
Measurements **10.06 - 10.15 X 6.18 MM**

GRADING RESULTS

Carat Weight **4.00 CARATS**

Color Grade **LIGHT BROWN**

Clarity Grade **VS 2**

Cut Grade **VERY GOOD**

ADDITIONAL GRADING INFORMATION

Polish **EXCELLENT**

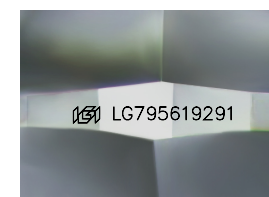
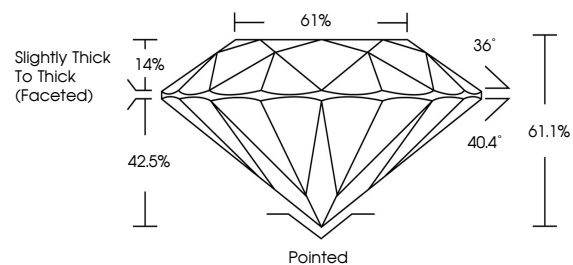
Symmetry **VERY GOOD**

Fluorescence **VERY SLIGHT**

Inscription(s) **LG795619291**

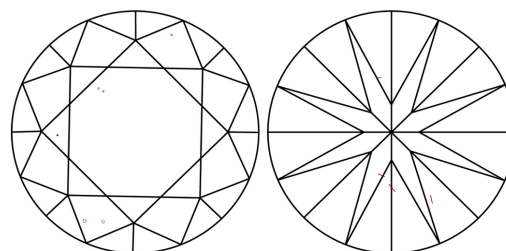
Comments: This Laboratory Grown Diamond was created by Chemical Vapor Deposition (CVD) growth process.
Indications of post-growth treatment.

PROPORTIONS



Sample Image Used

CLARITY CHARACTERISTICS



KEY TO SYMBOLS

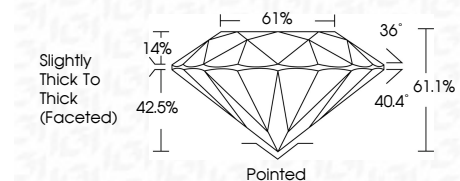
Red symbols indicate internal characteristics.
Green symbols indicate external characteristics.

COLOR

D E F G H I J Faint Very Light Light

CLARITY

FL	IF	VS ¹⁻²	VS ¹⁻²	SI ¹⁻²	I ¹⁻³
Flawless	Internally Flawless	Very Very Slightly Included	Very Slightly Included	Slightly Included	Included



ADDITIONAL GRADING INFORMATION

Polish **EXCELLENT**

Symmetry **VERY GOOD**

Fluorescence **VERY SLIGHT**

Inscription(s) **LG795619291**

Comments: This Laboratory Grown Diamond was created by Chemical Vapor Deposition (CVD) growth process.
Indications of post-growth treatment.



IGI



May 18, 2026
IGI Report No **LG795619291**
ROUND BRILLIANT
4.00 CARATS
Carat Weight
Color Grade **LIGHT BROWN**
Clarity Grade **VS 2**
Depth **61.1%**
Table **61%**
Girdle **Slightly Thick To Thick (Faceted)**
Culet **Pointed**
Polish **EXCELLENT**
Symmetry **VERY GOOD**
Fluorescence **VERY SLIGHT**
Inscription(s) **LG795619291**
Comments: This Laboratory Grown Diamond was created by Chemical Vapor Deposition (CVD) growth process.
Indications of post-growth treatment.