



ELECTRONIC COPY

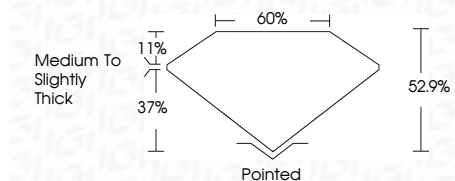
LG795618301
Report verification at igi.org



April 30, 2026
IGI Report Number **LG795618301**
Description **LABORATORY GROWN DIAMOND**
Shape and Cutting Style **LOZENGE STEP CUT**
Measurements **11.13 X 8.39 X 4.44 MM**

GRADING RESULTS

Carat Weight **2.09 CARATS**
Color Grade **F**
Clarity Grade **VVS 2**



ADDITIONAL GRADING INFORMATION

Polish **EXCELLENT**
Symmetry **EXCELLENT**
Fluorescence **NONE**
Inscription(s) **(IGI) LG795618301**
Comments: This Laboratory Grown Diamond was created by Chemical Vapor Deposition (CVD) growth process. Type IIa



April 30, 2026
IGI Report No LG795618301
LOZENGE STEP CUT
11.13 X 8.39 X 4.44 MM
2.09 CARATS
F
VVS 2
60%
37%
Medium to Slightly Thick
Pointed
EXCELLENT
EXCELLENT
NONE
(IGI) LG795618301
Comments: This Laboratory Grown Diamond was created by Chemical Vapor Deposition (CVD) growth process. Type IIa

April 30, 2026
IGI Report Number **LG795618301**
Description **LABORATORY GROWN DIAMOND**
Shape and Cutting Style **LOZENGE STEP CUT**
Measurements **11.13 X 8.39 X 4.44 MM**

GRADING RESULTS

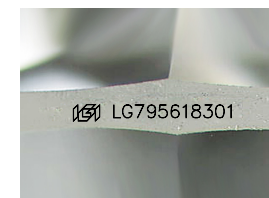
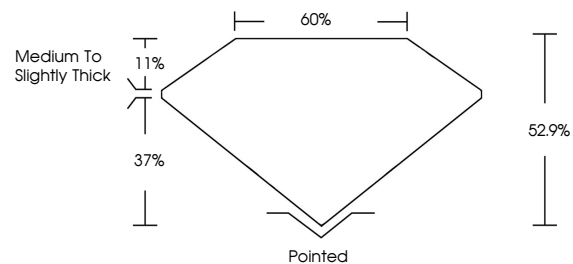
Carat Weight **2.09 CARATS**
Color Grade **F**
Clarity Grade **VVS 2**

ADDITIONAL GRADING INFORMATION

Polish **EXCELLENT**
Symmetry **EXCELLENT**
Fluorescence **NONE**
Inscription(s) **(IGI) LG795618301**

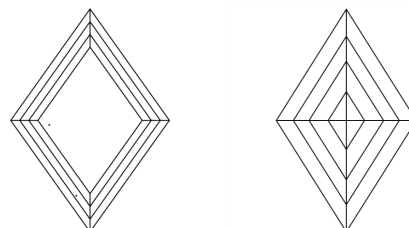
Comments: This Laboratory Grown Diamond was created by Chemical Vapor Deposition (CVD) growth process. Type IIa

PROPORTIONS



Sample Image Used

CLARITY CHARACTERISTICS



KEY TO SYMBOLS

Red symbols indicate internal characteristics.
Green symbols indicate external characteristics.

COLOR

D E F G H I J Faint Very Light Light

CLARITY

FL	IF	VVS ¹⁻²	VS ¹⁻²	SI ¹⁻²	I ¹⁻³
Flawless	Internally Flawless	Very Very Slightly Included	Very Slightly Included	Slightly Included	Included

