



**ELECTRONIC COPY**

LG795618071  
Report verification at [igi.org](http://igi.org)



April 28, 2026  
IGI Report Number **LG795618071**  
Description **LABORATORY GROWN DIAMOND**  
Shape and Cutting Style **SQUARE CUSHION MODIFIED BRILLIANT**  
Measurements **5.78 X 5.74 X 3.80 MM**  
**GRADING RESULTS**  
Carat Weight **1.06 CARAT**  
Color Grade **D**  
Clarity Grade **VVS 2**

**LABORATORY GROWN DIAMOND REPORT**

April 28, 2026  
IGI Report Number **LG795618071**  
Description **LABORATORY GROWN DIAMOND**  
Shape and Cutting Style **SQUARE CUSHION MODIFIED BRILLIANT**  
Measurements **5.78 X 5.74 X 3.80 MM**

**GRADING RESULTS**

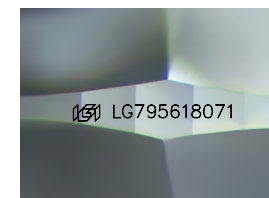
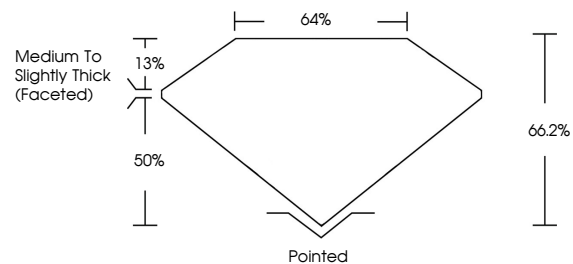
Carat Weight **1.06 CARAT**  
Color Grade **D**  
Clarity Grade **VVS 2**

**ADDITIONAL GRADING INFORMATION**

Polish **EXCELLENT**  
Symmetry **EXCELLENT**  
Fluorescence **NONE**  
Inscription(s) **IGI LG795618071**

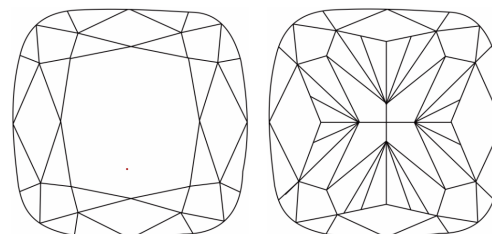
Comments: This Laboratory Grown Diamond was created by Chemical Vapor Deposition (CVD) growth process.  
Type IIa

**PROPORTIONS**



Sample Image Used

**CLARITY CHARACTERISTICS**



**KEY TO SYMBOLS**

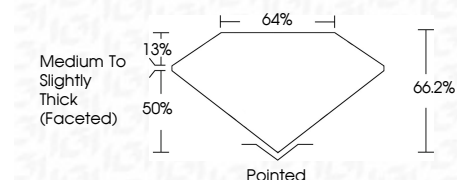
Red symbols indicate internal characteristics.  
Green symbols indicate external characteristics.

**COLOR**

D E F G H I J Faint Very Light Light

**CLARITY**

FL	IF	VVS <sup>1-2</sup>	VS <sup>1-2</sup>	SI <sup>1-2</sup>	I <sup>1-3</sup>
Flawless	Internally Flawless	Very Very Slightly Included	Very Slightly Included	Slightly Included	Included



**ADDITIONAL GRADING INFORMATION**

Polish **EXCELLENT**  
Symmetry **EXCELLENT**  
Fluorescence **NONE**  
Inscription(s) **IGI LG795618071**  
Comments: This Laboratory Grown Diamond was created by Chemical Vapor Deposition (CVD) growth process.  
Type IIa



April 28, 2026  
IGI Report No. LG795618071  
**SQUARE CUSHION MODIFIED BRILLIANT**  
1.06 CARAT  
D  
5.78 X 5.74 X 3.80 MM  
VVS 2  
66.2%  
44%  
Medium to Slightly Thick (Faceted)  
Pointed  
EXCELLENT  
EXCELLENT  
NONE  
IGI LG795618071  
Comments: This Laboratory Grown Diamond was created by Chemical Vapor Deposition (CVD) growth process.  
Type IIa