



ELECTRONIC COPY

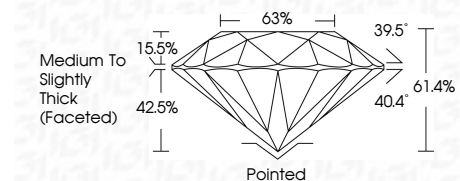
LG795617985
Report verification at igi.org



April 30, 2026
IGI Report Number **LG795617985**
Description **LABORATORY GROWN DIAMOND**
Shape and Cutting Style **ROUND BRILLIANT**
Measurements **6.35 - 6.39 X 3.91 MM**

GRADING RESULTS

Carat Weight **1.00 CARAT**
Color Grade **F**
Clarity Grade **VVS 2**
Cut Grade **GOOD**

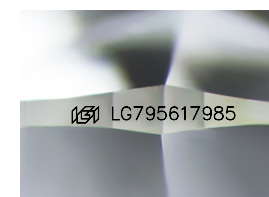


ADDITIONAL GRADING INFORMATION

Polish **VERY GOOD**
Symmetry **GOOD**
Fluorescence **NONE**
Inscription(s) **IGI LG795617985**
Comments: As Grown - No indication of post-growth treatment.
This Laboratory Grown Diamond was created by High Pressure High Temperature (HPHT) growth process.
Type II

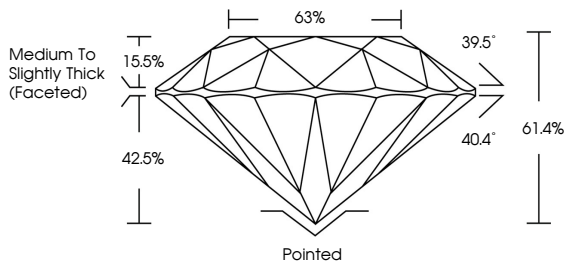


April 30, 2026
IGI Report No LG795617985
ROUND BRILLIANT
6.35 - 6.39 X 3.91 MM
1.00 CARAT
F
VVS 2
GOOD
61.4%
68%
Medium To Slightly Thick (Faceted)
Pointed
VERY GOOD
GOOD
NONE
IGI LG795617985
Comments: As Grown - No indication of post-growth treatment.
This Laboratory Grown Diamond was created by High Pressure High Temperature (HPHT) growth process.
Type II

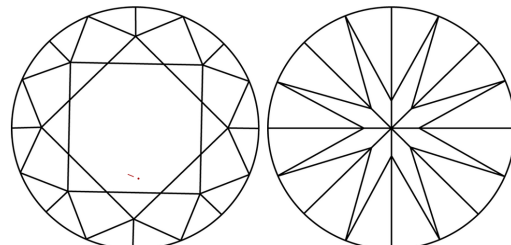


Sample Image Used

PROPORTIONS



CLARITY CHARACTERISTICS



KEY TO SYMBOLS

Red symbols indicate internal characteristics.
Green symbols indicate external characteristics.

COLOR

D	E	F	G	H	I	J	Faint	Very Light	Light
---	---	---	---	---	---	---	-------	------------	-------

CLARITY

FL	IF	VVS ¹⁻²	VS ¹⁻²	SI ¹⁻²	I ¹⁻³
Flawless	Internally Flawless	Very Very Slightly Included	Very Slightly Included	Slightly Included	Included

