



April 28, 2026

IGI Report Number LG795617912
ROUND BRILLIANT
LABORATORY GROWN DIAMOND
6.25 - 6.35 X 3.73 MM

Carat Weight 0.91 CARAT
Color Grade FANCY INTENSE PINK
Clarity Grade VVS 2
Cut Grade EXCELLENT
Polish VERY GOOD
Symmetry VERY GOOD
Fluorescence SLIGHT
Inscription(s) IGI LG795617912

Comments: This Laboratory Grown Diamond was created by High Pressure High Temperature (HPHT) growth process. Indications of post-growth treatment.

LABORATORY GROWN DIAMOND REPORT

April 28, 2026
IGI Report Number **LG795617912**
Description **LABORATORY GROWN DIAMOND**
Shape and Cutting Style **ROUND BRILLIANT**
Measurements **6.25 - 6.35 X 3.73 MM**

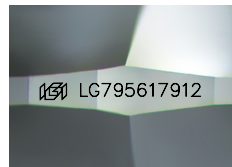
GRADING RESULTS

Carat Weight 0.91 CARAT
Color Grade FANCY INTENSE PINK
Clarity Grade VVS 2
Cut Grade EXCELLENT

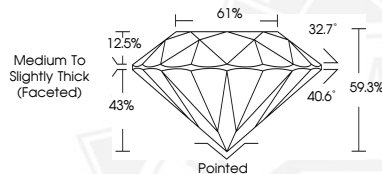
ADDITIONAL GRADING INFORMATION

Polish VERY GOOD
Symmetry VERY GOOD
Fluorescence SLIGHT
Inscription(s) IGI LG795617912

Comments: This Laboratory Grown Diamond was created by High Pressure High Temperature (HPHT) growth process. Indications of post-growth treatment.



Sample Image Used



April 28, 2026

IGI Report Number LG795617912
ROUND BRILLIANT
LABORATORY GROWN DIAMOND
6.25 - 6.35 X 3.73 MM

Carat Weight 0.91 CARAT
Color Grade FANCY INTENSE PINK
Clarity Grade VVS 2
Cut Grade EXCELLENT
Polish VERY GOOD
Symmetry VERY GOOD
Fluorescence SLIGHT
Inscription(s) IGI LG795617912

Comments: This Laboratory Grown Diamond was created by High Pressure High Temperature (HPHT) growth process. Indications of post-growth treatment.



THIS DOCUMENT WAS PRODUCED WITH THE FOLLOWING SECURITY MEASURES: SPECIAL DOCUMENT PAPER, INK SCREENS, WATERMARK, BACKGROUND DESIGNS, HOLOGRAM AND OTHER SECURITY FEATURES NOT LISTED AND DO EXCEED DOCUMENT SECURITY INDUSTRY GUIDELINES.