



April 28, 2026

IGI Report Number LG795617911
ROUND BRILLIANT
LABORATORY GROWN DIAMOND
6.05 - 6.07 X 3.67 MM

Carat Weight 0.83 CARAT
Color Grade FANCY INTENSE PINK

Clarity Grade VS 2
Cut Grade EXCELLENT

Polish VERY GOOD
Symmetry VERY GOOD

Fluorescence SLIGHT
Inscription(s) IGI LG795617911

Comments: This Laboratory Grown Diamond was created by High Pressure High Temperature (HPHT) growth process. Indications of post-growth treatment.

LABORATORY GROWN DIAMOND REPORT

April 28, 2026

IGI Report Number

LG795617911

Description

LABORATORY GROWN DIAMOND

Shape and Cutting Style

ROUND BRILLIANT

Measurements

6.05 - 6.07 X 3.67 MM

GRADING RESULTS

Carat Weight

0.83 CARAT

Color Grade

FANCY INTENSE PINK

Clarity Grade

VS 2

Cut Grade

EXCELLENT

ADDITIONAL GRADING INFORMATION

Polish

VERY GOOD

Symmetry

VERY GOOD

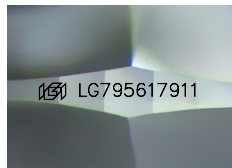
Fluorescence

SLIGHT

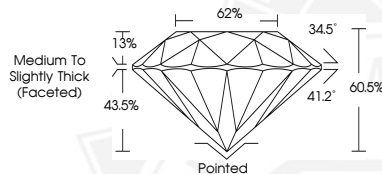
Inscription(s)

IGI LG795617911

Comments: This Laboratory Grown Diamond was created by High Pressure High Temperature (HPHT) growth process. Indications of post-growth treatment.



Sample Image Used



April 28, 2026

IGI Report Number LG795617911
ROUND BRILLIANT
LABORATORY GROWN DIAMOND
6.05 - 6.07 X 3.67 MM

Carat Weight 0.83 CARAT
Color Grade FANCY INTENSE PINK

Clarity Grade VS 2
Cut Grade EXCELLENT

Polish VERY GOOD
Symmetry VERY GOOD

Fluorescence SLIGHT
Inscription(s) IGI LG795617911

Comments: This Laboratory Grown Diamond was created by High Pressure High Temperature (HPHT) growth process. Indications of post-growth treatment.



THIS DOCUMENT WAS PRODUCED WITH THE FOLLOWING SECURITY MEASURES: SPECIAL DOCUMENT PAPER, INK SCREENS, WATERMARK, BACKGROUND DESIGNS, HOLOGRAM AND OTHER SECURITY FEATURES NOT LISTED AND DO EXCEED DOCUMENT SECURITY INDUSTRY GUIDELINES.