



April 28, 2026

IGI Report Number LG795617905
ROUND BRILLIANT
LABORATORY GROWN DIAMOND
6.28 - 6.34 X 3.85 MM

Carat Weight 0.97 CARAT
Color Grade FANCY INTENSE PINK
Clarity Grade VS 2
Cut Grade VERY GOOD
Polish VERY GOOD
Symmetry VERY GOOD
Fluorescence SLIGHT
Inscription(s) IGI LG795617905

Comments: This Laboratory Grown Diamond was created by High Pressure High Temperature (HPHT) growth process. Indications of post-growth treatment.

LABORATORY GROWN DIAMOND REPORT

April 28, 2026
IGI Report Number **LG795617905**
Description **LABORATORY GROWN DIAMOND**
Shape and Cutting Style **ROUND BRILLIANT**
Measurements **6.28 - 6.34 X 3.85 MM**

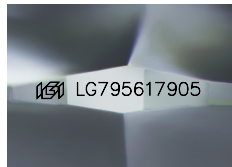
GRADING RESULTS

Carat Weight 0.97 CARAT
Color Grade FANCY INTENSE PINK
Clarity Grade VS 2
Cut Grade VERY GOOD

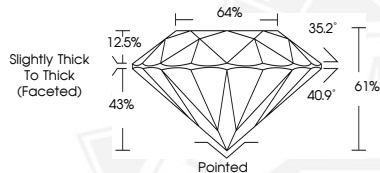
ADDITIONAL GRADING INFORMATION

Polish VERY GOOD
Symmetry VERY GOOD
Fluorescence SLIGHT
Inscription(s) IGI LG795617905

Comments: This Laboratory Grown Diamond was created by High Pressure High Temperature (HPHT) growth process. Indications of post-growth treatment.



Sample Image Used



April 28, 2026

IGI Report Number LG795617905
ROUND BRILLIANT
LABORATORY GROWN DIAMOND
6.28 - 6.34 X 3.85 MM

Carat Weight 0.97 CARAT
Color Grade FANCY INTENSE PINK
Clarity Grade VS 2
Cut Grade VERY GOOD
Polish VERY GOOD
Symmetry VERY GOOD
Fluorescence SLIGHT
Inscription(s) IGI LG795617905

Comments: This Laboratory Grown Diamond was created by High Pressure High Temperature (HPHT) growth process. Indications of post-growth treatment.



THIS DOCUMENT WAS PRODUCED WITH THE FOLLOWING SECURITY MEASURES: SPECIAL DOCUMENT PAPER, INK SCREENS, WATERMARK, BACKGROUND DESIGNS, HOLOGRAM AND OTHER SECURITY FEATURES NOT LISTED AND DO EXCEED DOCUMENT SECURITY INDUSTRY GUIDELINES.