



April 28, 2026

**IGI Report Number** LG795617904  
**ROUND BRILLIANT**  
**LABORATORY GROWN DIAMOND**  
**6.25 - 6.31 X 3.65 MM**

**Carat Weight** 0.87 CARAT  
**Color Grade** FANCY INTENSE PINK  
**Clarity Grade** VS 1  
**Cut Grade** EXCELLENT  
**Polish** VERY GOOD  
**Symmetry** VERY GOOD  
**Fluorescence** SLIGHT  
**Inscription(s)** IGI LG795617904

Comments: This Laboratory Grown Diamond was created by High Pressure High Temperature (HPHT) growth process. Indications of post-growth treatment.

**LABORATORY GROWN DIAMOND REPORT**

April 28, 2026  
IGI Report Number **LG795617904**  
Description **LABORATORY GROWN DIAMOND**  
Shape and Cutting Style **ROUND BRILLIANT**  
Measurements **6.25 - 6.31 X 3.65 MM**

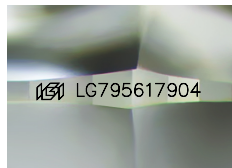
**GRADING RESULTS**

**Carat Weight** 0.87 CARAT  
**Color Grade** FANCY INTENSE PINK  
**Clarity Grade** VS 1  
**Cut Grade** EXCELLENT

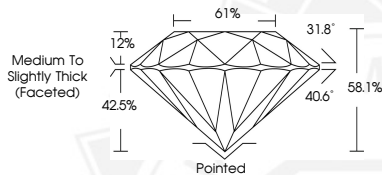
**ADDITIONAL GRADING INFORMATION**

**Polish** VERY GOOD  
**Symmetry** VERY GOOD  
**Fluorescence** SLIGHT  
**Inscription(s)** IGI LG795617904

Comments: This Laboratory Grown Diamond was created by High Pressure High Temperature (HPHT) growth process. Indications of post-growth treatment.



Sample Image Used



April 28, 2026

**IGI Report Number** LG795617904  
**ROUND BRILLIANT**  
**LABORATORY GROWN DIAMOND**  
**6.25 - 6.31 X 3.65 MM**

**Carat Weight** 0.87 CARAT  
**Color Grade** FANCY INTENSE PINK  
**Clarity Grade** VS 1  
**Cut Grade** EXCELLENT  
**Polish** VERY GOOD  
**Symmetry** VERY GOOD  
**Fluorescence** SLIGHT  
**Inscription(s)** IGI LG795617904

Comments: This Laboratory Grown Diamond was created by High Pressure High Temperature (HPHT) growth process. Indications of post-growth treatment.

THIS DOCUMENT WAS PRODUCED WITH THE FOLLOWING SECURITY MEASURES: SPECIAL DOCUMENT PAPER, INK SCREENS, WATERMARK, BACKGROUND DESIGNS, HOLOGRAM AND OTHER SECURITY FEATURES NOT LISTED AND DO EXCEED DOCUMENT SECURITY INDUSTRY GUIDELINES.