



April 28, 2026

IGI Report Number **LG795617903**

**ROUND BRILLIANT**

**LABORATORY GROWN DIAMOND**

**6.30 - 6.36 X 3.92 MM**

Carat Weight **0.99 CARAT**

Color Grade **FANCY LIGHT PINK**

Clarity Grade **VS 2**

Cut Grade **EXCELLENT**

Polish **VERY GOOD**

Symmetry **VERY GOOD**

Fluorescence **SLIGHT**

Inscription(s) **IGI LG795617903**

Comments: This Laboratory Grown Diamond was created by High Pressure High Temperature (HPHT) growth process. Indications of post-growth treatment.

**LABORATORY GROWN DIAMOND REPORT**

April 28, 2026

IGI Report Number

**LG795617903**

Description

**LABORATORY GROWN DIAMOND**

Shape and Cutting Style

**ROUND BRILLIANT**

Measurements

**6.30 - 6.36 X 3.92 MM**

**GRADING RESULTS**

Carat Weight

**0.99 CARAT**

Color Grade

**FANCY LIGHT PINK**

Clarity Grade

**VS 2**

Cut Grade

**EXCELLENT**

**ADDITIONAL GRADING INFORMATION**

Polish

**VERY GOOD**

Symmetry

**VERY GOOD**

Fluorescence

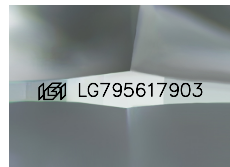
**SLIGHT**

Inscription(s)

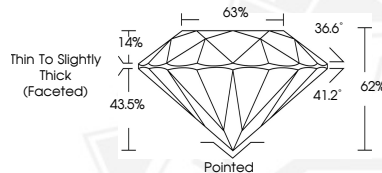
**IGI LG795617903**

Comments: This Laboratory Grown Diamond was created by High Pressure High Temperature (HPHT) growth process.

Indications of post-growth treatment.



Sample Image Used



April 28, 2026

IGI Report Number **LG795617903**

**ROUND BRILLIANT**

**LABORATORY GROWN DIAMOND**

**6.30 - 6.36 X 3.92 MM**

Carat Weight **0.99 CARAT**

Color Grade **FANCY LIGHT PINK**

Clarity Grade **VS 2**

Cut Grade **EXCELLENT**

Polish **VERY GOOD**

Symmetry **VERY GOOD**

Fluorescence **SLIGHT**

Inscription(s) **IGI LG795617903**

Comments: This Laboratory Grown Diamond was created by High Pressure High Temperature (HPHT) growth process. Indications of post-growth treatment.



THIS DOCUMENT WAS PRODUCED WITH THE FOLLOWING SECURITY MEASURES: SPECIAL DOCUMENT PAPER, INK SCREENS, WATERMARK, BACKGROUND DESIGNS, HOLOGRAM AND OTHER SECURITY FEATURES NOT LISTED AND DO EXCEED DOCUMENT SECURITY INDUSTRY GUIDELINES.