



June 15, 2026

IGI Report Number **LG795615838**

ROUND BRILLIANT

LABORATORY GROWN DIAMOND

5.11 - 5.15 X 3.02 MM

Carat Weight **0.50 CARAT**

Color Grade **D**

Clarity Grade **VS 2**

Cut Grade **EXCELLENT**

Polish **EXCELLENT**

Symmetry **EXCELLENT**

Fluorescence **NONE**

Inscription(s) **IGI LG795615838**

Comments: As Grown - No

indication of post-growth

treatment. This Laboratory Grown

Diamond was created by High

Pressure High Temperature (HPHT)

growth process. Type II

LABORATORY GROWN DIAMOND REPORT

June 15, 2026

IGI Report Number

LG795615838

Description

LABORATORY GROWN DIAMOND

Shape and Cutting Style

ROUND BRILLIANT

Measurements

5.11 - 5.15 X 3.02 MM

GRADING RESULTS

Carat Weight

0.50 CARAT

Color Grade

D

Clarity Grade

VS 2

Cut Grade

EXCELLENT

ADDITIONAL GRADING INFORMATION

Polish

EXCELLENT

Symmetry

EXCELLENT

Fluorescence

NONE

Inscription(s)

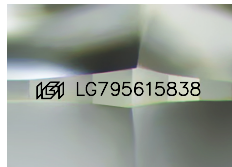
IGI LG795615838

Comments: As Grown - No indication of post-growth treatment.

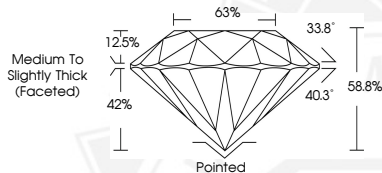
This Laboratory Grown Diamond was created by High Pressure High

Temperature (HPHT) growth process.

Type II



Sample Image Used



June 15, 2026

IGI Report Number **LG795615838**

ROUND BRILLIANT

LABORATORY GROWN DIAMOND

5.11 - 5.15 X 3.02 MM

Carat Weight **0.50 CARAT**

Color Grade **D**

Clarity Grade **VS 2**

Cut Grade **EXCELLENT**

Polish **EXCELLENT**

Symmetry **EXCELLENT**

Fluorescence **NONE**

Inscription(s) **IGI LG795615838**

Comments: As Grown - No

indication of post-growth

treatment. This Laboratory Grown

Diamond was created by High

Pressure High Temperature (HPHT)

growth process. Type II



THIS DOCUMENT WAS PRODUCED WITH THE FOLLOWING SECURITY MEASURES: SPECIAL DOCUMENT PAPER, INK SCREENS, WATERMARK, BACKGROUND DESIGNS, HOLOGRAM AND OTHER SECURITY FEATURES NOT LISTED AND DO EXCEED DOCUMENT SECURITY INDUSTRY GUIDELINES.