



June 11, 2026

IGI Report Number LG795615716
ROUND BRILLIANT
LABORATORY GROWN DIAMOND
5.16 - 5.19 X 3.13 MM

Carat Weight 0.50 CARAT
Color Grade E
Clarity Grade VVS 2
Cut Grade EXCELLENT
Polish EXCELLENT
Symmetry EXCELLENT
Fluorescence NONE
Inscription(s) IGI LG795615716

Comments: This Laboratory Grown Diamond was created by Chemical Vapor Deposition (CVD) growth process. Type IIa

LABORATORY GROWN DIAMOND REPORT

June 11, 2026
IGI Report Number **LG795615716**
Description **LABORATORY GROWN DIAMOND**
Shape and Cutting Style **ROUND BRILLIANT**
Measurements **5.16 - 5.19 X 3.13 MM**

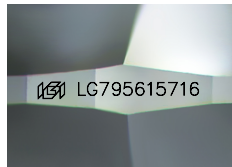
GRADING RESULTS

Carat Weight 0.50 CARAT
Color Grade E
Clarity Grade VVS 2
Cut Grade EXCELLENT

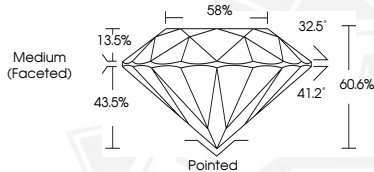
ADDITIONAL GRADING INFORMATION

Polish EXCELLENT
Symmetry EXCELLENT
Fluorescence NONE
Inscription(s) IGI LG795615716

Comments: This Laboratory Grown Diamond was created by Chemical Vapor Deposition (CVD) growth process. Type IIa



Sample Image Used



June 11, 2026

IGI Report Number LG795615716
ROUND BRILLIANT
LABORATORY GROWN DIAMOND
5.16 - 5.19 X 3.13 MM

Carat Weight 0.50 CARAT
Color Grade E
Clarity Grade VVS 2
Cut Grade EXCELLENT
Polish EXCELLENT
Symmetry EXCELLENT
Fluorescence NONE
Inscription(s) IGI LG795615716

Comments: This Laboratory Grown Diamond was created by Chemical Vapor Deposition (CVD) growth process. Type IIa



THIS DOCUMENT WAS PRODUCED WITH THE FOLLOWING SECURITY MEASURES: SPECIAL DOCUMENT PAPER, INK SCREENS, WATERMARK, BACKGROUND DESIGNS, HOLOGRAM AND OTHER SECURITY FEATURES NOT LISTED AND DO EXCEED DOCUMENT SECURITY INDUSTRY GUIDELINES.