



May 21, 2026

IGI Report Number LG795614981
SQUARE CUSHION BRILLIANT
LABORATORY GROWN DIAMOND
5.10 X 4.89 X 3.51 MM

Carat Weight 0.67 CARAT
Color Grade F
Clarity Grade VVS 2
Polish VERY GOOD
Symmetry EXCELLENT
Fluorescence NONE
Inscription(s) IGI LG795614981

Comments: This Laboratory Grown Diamond was created by Chemical Vapor Deposition (CVD) growth process. Type IIa

LABORATORY GROWN DIAMOND REPORT

May 21, 2026
IGI Report Number **LG795614981**
Description **LABORATORY GROWN DIAMOND**
Shape and Cutting Style **SQUARE CUSHION BRILLIANT**
Measurements **5.10 X 4.89 X 3.51 MM**

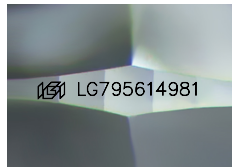
GRADING RESULTS

Carat Weight 0.67 CARAT
Color Grade F
Clarity Grade VVS 2

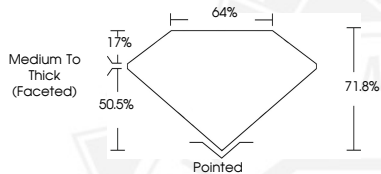
ADDITIONAL GRADING INFORMATION

Polish VERY GOOD
Symmetry EXCELLENT
Fluorescence NONE
Inscription(s) IGI LG795614981

Comments: This Laboratory Grown Diamond was created by Chemical Vapor Deposition (CVD) growth process. Type IIa



Sample Image Used



May 21, 2026

IGI Report Number LG795614981
SQUARE CUSHION BRILLIANT
LABORATORY GROWN DIAMOND
5.10 X 4.89 X 3.51 MM

Carat Weight 0.67 CARAT
Color Grade F
Clarity Grade VVS 2
Polish VERY GOOD
Symmetry EXCELLENT
Fluorescence NONE
Inscription(s) IGI LG795614981

Comments: This Laboratory Grown Diamond was created by Chemical Vapor Deposition (CVD) growth process. Type IIa



THIS DOCUMENT WAS PRODUCED WITH THE FOLLOWING SECURITY MEASURES: SPECIAL DOCUMENT PAPER, INK SCREENS, WATERMARK, BACKGROUND DESIGNS, HOLOGRAM AND OTHER SECURITY FEATURES NOT LISTED AND DO EXCEED DOCUMENT SECURITY INDUSTRY GUIDELINES.