



INTERNATIONAL GEMOLOGICAL INSTITUTE

ELECTRONIC COPY



May 14, 2026

IGI Report Number **LG795614668**
HEART MODIFIED BRILLIANT
LABORATORY GROWN DIAMOND
4.94 X 5.96 X 3.26 MM

Carat Weight **0.68 CARAT**
Color Grade **FANCY INTENSE
YELLOW**

Clarity Grade **VS 2**
Polish **VERY GOOD**
Symmetry **VERY GOOD**
Fluorescence **NONE**
Inscription(s) **IGI LG795614668**

Comments: This Laboratory Grown Diamond was created by Chemical Vapor Deposition (CVD) growth process.

LABORATORY GROWN DIAMOND REPORT

May 14, 2026
IGI Report Number **LG795614668**
Description **LABORATORY GROWN DIAMOND**
Shape and Cutting Style **HEART MODIFIED BRILLIANT**
Measurements **4.94 X 5.96 X 3.26 MM**

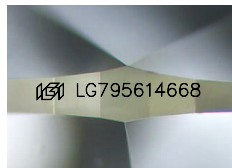
GRADING RESULTS

Carat Weight **0.68 CARAT**
Color Grade **FANCY INTENSE YELLOW**
Clarity Grade **VS 2**

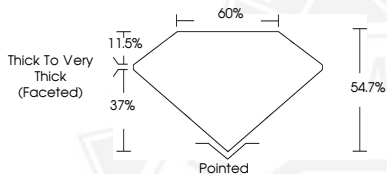
ADDITIONAL GRADING INFORMATION

Polish **VERY GOOD**
Symmetry **VERY GOOD**
Fluorescence **NONE**
Inscription(s) **IGI LG795614668**

Comments: This Laboratory Grown Diamond was created by Chemical Vapor Deposition (CVD) growth process.



Sample Image Used



May 14, 2026

IGI Report Number **LG795614668**
HEART MODIFIED BRILLIANT
LABORATORY GROWN DIAMOND
4.94 X 5.96 X 3.26 MM

Carat Weight **0.68 CARAT**
Color Grade **FANCY INTENSE
YELLOW**

Clarity Grade **VS 2**
Polish **VERY GOOD**
Symmetry **VERY GOOD**
Fluorescence **NONE**
Inscription(s) **IGI LG795614668**

Comments: This Laboratory Grown Diamond was created by Chemical Vapor Deposition (CVD) growth process.



THIS DOCUMENT WAS PRODUCED WITH THE FOLLOWING SECURITY MEASURES: SPECIAL DOCUMENT PAPER, INK SCREENS, WATERMARK, BACKGROUND DESIGNS, HOLOGRAM AND OTHER SECURITY FEATURES NOT LISTED AND DO EXCEED DOCUMENT SECURITY INDUSTRY GUIDELINES.

For terms & conditions and to verify this report, please visit www.igi.org