



May 14, 2026

IGI Report Number **LG795614667**

**HEART BRILLIANT
LABORATORY GROWN DIAMOND
5.22 X 6.75 X 3.82 MM**

Carat Weight **0.82 CARAT**
Color Grade **FANCY INTENSE
YELLOW**

Clarity Grade **SI 1**
Polish **VERY GOOD**
Symmetry **VERY GOOD**
Fluorescence **NONE**
Inscription(s) **IGI LG795614667**

Comments: This Laboratory Grown Diamond was created by Chemical Vapor Deposition (CVD) growth process.

LABORATORY GROWN DIAMOND REPORT

May 14, 2026
IGI Report Number **LG795614667**
Description **LABORATORY GROWN DIAMOND**
Shape and Cutting Style **HEART BRILLIANT**
Measurements **5.22 X 6.75 X 3.82 MM**

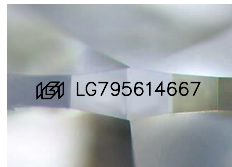
GRADING RESULTS

Carat Weight **0.82 CARAT**
Color Grade **FANCY INTENSE YELLOW**
Clarity Grade **SI 1**

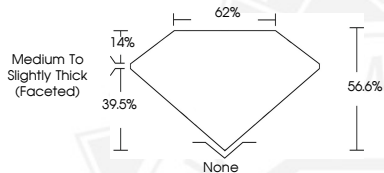
ADDITIONAL GRADING INFORMATION

Polish **VERY GOOD**
Symmetry **VERY GOOD**
Fluorescence **NONE**
Inscription(s) **IGI LG795614667**

Comments: This Laboratory Grown Diamond was created by Chemical Vapor Deposition (CVD) growth process.



Sample Image Used



May 14, 2026

IGI Report Number **LG795614667**

**HEART BRILLIANT
LABORATORY GROWN DIAMOND
5.22 X 6.75 X 3.82 MM**

Carat Weight **0.82 CARAT**
Color Grade **FANCY INTENSE
YELLOW**

Clarity Grade **SI 1**
Polish **VERY GOOD**
Symmetry **VERY GOOD**
Fluorescence **NONE**
Inscription(s) **IGI LG795614667**

Comments: This Laboratory Grown Diamond was created by Chemical Vapor Deposition (CVD) growth process.



THIS DOCUMENT WAS PRODUCED WITH THE FOLLOWING SECURITY MEASURES: SPECIAL DOCUMENT PAPER, INK SCREENS, WATERMARK, BACKGROUND DESIGNS, HOLOGRAM AND OTHER SECURITY FEATURES NOT LISTED AND DO EXCEED DOCUMENT SECURITY INDUSTRY GUIDELINES.