



**INTERNATIONAL
GEMOLOGICAL
INSTITUTE**

ELECTRONIC COPY



May 14, 2026

IGI Report Number LG795614657
ROUND BRILLIANT
LABORATORY GROWN DIAMOND
5.74 - 5.79 X 3.42 MM

Carat Weight 0.74 CARAT
Color Grade FANCY VIVID PINK
Clarity Grade VVS 2
Cut Grade VERY GOOD
Polish EXCELLENT
Symmetry VERY GOOD
Fluorescence STRONG
Inscription(s) IGI LG795614657

Comments: This Laboratory Grown Diamond was created by Chemical Vapor Deposition (CVD) growth process. Indications of post-growth treatment.

LABORATORY GROWN DIAMOND REPORT

May 14, 2026
IGI Report Number **LG795614657**
Description **LABORATORY GROWN DIAMOND**
Shape and Cutting Style **ROUND BRILLIANT**
Measurements **5.74 - 5.79 X 3.42 MM**

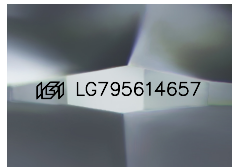
GRADING RESULTS

Carat Weight 0.74 CARAT
Color Grade FANCY VIVID PINK
Clarity Grade VVS 2
Cut Grade VERY GOOD

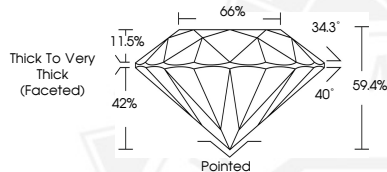
ADDITIONAL GRADING INFORMATION

Polish EXCELLENT
Symmetry VERY GOOD
Fluorescence STRONG
Inscription(s) IGI LG795614657

Comments: This Laboratory Grown Diamond was created by Chemical Vapor Deposition (CVD) growth process. Indications of post-growth treatment.



Sample Image Used



May 14, 2026

IGI Report Number LG795614657
ROUND BRILLIANT
LABORATORY GROWN DIAMOND
5.74 - 5.79 X 3.42 MM

Carat Weight 0.74 CARAT
Color Grade FANCY VIVID PINK
Clarity Grade VVS 2
Cut Grade VERY GOOD
Polish EXCELLENT
Symmetry VERY GOOD
Fluorescence STRONG
Inscription(s) IGI LG795614657

Comments: This Laboratory Grown Diamond was created by Chemical Vapor Deposition (CVD) growth process. Indications of post-growth treatment.



THIS DOCUMENT WAS PRODUCED WITH THE FOLLOWING SECURITY MEASURES: SPECIAL DOCUMENT PAPER, INK SCREENS, WATERMARK, BACKGROUND DESIGNS, HOLOGRAM AND OTHER SECURITY FEATURES NOT LISTED AND DO EXCEED DOCUMENT SECURITY INDUSTRY GUIDELINES.

For terms & conditions and to verify this report, please visit www.igi.org