



May 14, 2026

IGI Report Number **LG795614649**

SHIELD STEP CUT
LABORATORY GROWN DIAMOND
10.62 X 5.07 X 2.71 MM
Carat Weight **0.95 CARAT**
Color Grade **FANCY VIVID PINK**
Clarity Grade **VS 2**
Polish **VERY GOOD**
Symmetry **VERY GOOD**
Fluorescence **STRONG**
Inscription(s) **IGI LG795614649**

Comments: This Laboratory Grown Diamond was created by Chemical Vapor Deposition (CVD) growth process. Indications of post-growth treatment.

LABORATORY GROWN DIAMOND REPORT

May 14, 2026
IGI Report Number **LG795614649**
Description **LABORATORY GROWN DIAMOND**
Shape and Cutting Style **SHIELD STEP CUT**
Measurements **10.62 X 5.07 X 2.71 MM**

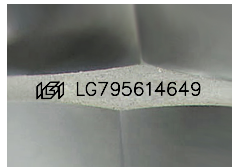
GRADING RESULTS

Carat Weight **0.95 CARAT**
Color Grade **FANCY VIVID PINK**
Clarity Grade **VS 2**

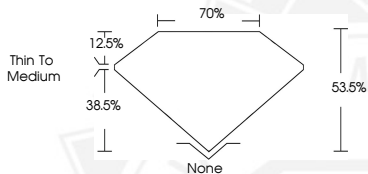
ADDITIONAL GRADING INFORMATION

Polish **VERY GOOD**
Symmetry **VERY GOOD**
Fluorescence **STRONG**
Inscription(s) **IGI LG795614649**

Comments: This Laboratory Grown Diamond was created by Chemical Vapor Deposition (CVD) growth process. Indications of post-growth treatment.



Sample Image Used



May 14, 2026

IGI Report Number **LG795614649**

SHIELD STEP CUT
LABORATORY GROWN DIAMOND
10.62 X 5.07 X 2.71 MM
Carat Weight **0.95 CARAT**
Color Grade **FANCY VIVID PINK**
Clarity Grade **VS 2**
Polish **VERY GOOD**
Symmetry **VERY GOOD**
Fluorescence **STRONG**
Inscription(s) **IGI LG795614649**

Comments: This Laboratory Grown Diamond was created by Chemical Vapor Deposition (CVD) growth process. Indications of post-growth treatment.



THIS DOCUMENT WAS PRODUCED WITH THE FOLLOWING SECURITY MEASURES: SPECIAL DOCUMENT PAPER, INK SCREENS, WATERMARK, BACKGROUND DESIGNS, HOLOGRAM AND OTHER SECURITY FEATURES NOT LISTED AND DO EXCEED DOCUMENT SECURITY INDUSTRY GUIDELINES.