



May 11, 2026

**IGI Report Number LG795614568**  
**TRAPEZE BRILLIANT CUT**  
**LABORATORY GROWN DIAMOND**  
**7.44 X 4.69 X 3.22 MM**

Carat Weight **0.82 CARAT**  
Color Grade **E**  
Clarity Grade **VVS 2**  
Polish **VERY GOOD**  
Symmetry **VERY GOOD**  
Fluorescence **NONE**  
Inscription(s) **IGI LG795614568**

Comments: As Grown - No indication of post-growth treatment. This Laboratory Grown Diamond was created by High Pressure High Temperature (HPHT) growth process. Type II

**LABORATORY GROWN DIAMOND REPORT**

May 11, 2026  
IGI Report Number **LG795614568**  
Description **LABORATORY GROWN DIAMOND**  
Shape and Cutting Style **TRAPEZE BRILLIANT CUT**  
Measurements **7.44 X 4.69 X 3.22 MM**

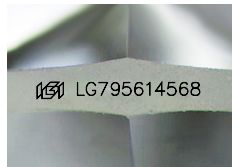
**GRADING RESULTS**

Carat Weight **0.82 CARAT**  
Color Grade **E**  
Clarity Grade **VVS 2**

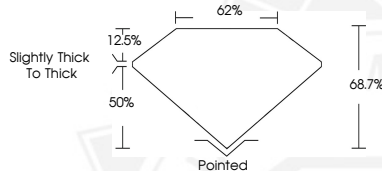
**ADDITIONAL GRADING INFORMATION**

Polish **VERY GOOD**  
Symmetry **VERY GOOD**  
Fluorescence **NONE**  
Inscription(s) **IGI LG795614568**

Comments: As Grown - No indication of post-growth treatment. This Laboratory Grown Diamond was created by High Pressure High Temperature (HPHT) growth process. Type II



Sample Image Used



May 11, 2026

**IGI Report Number LG795614568**  
**TRAPEZE BRILLIANT CUT**  
**LABORATORY GROWN DIAMOND**  
**7.44 X 4.69 X 3.22 MM**

Carat Weight **0.82 CARAT**  
Color Grade **E**  
Clarity Grade **VVS 2**  
Polish **VERY GOOD**  
Symmetry **VERY GOOD**  
Fluorescence **NONE**  
Inscription(s) **IGI LG795614568**

Comments: As Grown - No indication of post-growth treatment. This Laboratory Grown Diamond was created by High Pressure High Temperature (HPHT) growth process. Type II



THIS DOCUMENT WAS PRODUCED WITH THE FOLLOWING SECURITY MEASURES: SPECIAL DOCUMENT PAPER, INK SCREENS, WATERMARK BACKGROUND DESIGNS, HOLOGRAM AND OTHER SECURITY FEATURES NOT LISTED AND DO EXCEED DOCUMENT SECURITY INDUSTRY GUIDELINES.