



May 13, 2026

IGI Report Number **LG795614514**

ROUND BRILLIANT

LABORATORY GROWN DIAMOND

5.46 - 5.49 X 3.29 MM

Carat Weight **0.60 CARAT**

Color Grade **D**

Clarity Grade **VS 1**

Cut Grade **IDEAL**

Polish **EXCELLENT**

Symmetry **EXCELLENT**

Fluorescence **NONE**

Inscription(s) **IGI LG795614514**

Comments: HEARTS & ARROWS This Laboratory Grown Diamond was created by Chemical Vapor Deposition (CVD) growth process. Type Ila

LABORATORY GROWN DIAMOND REPORT

May 13, 2026

IGI Report Number

LG795614514

Description

LABORATORY GROWN DIAMOND

Shape and Cutting Style

ROUND BRILLIANT

Measurements

5.46 - 5.49 X 3.29 MM

GRADING RESULTS

Carat Weight

0.60 CARAT

Color Grade

D

Clarity Grade

VS 1

Cut Grade

IDEAL

ADDITIONAL GRADING INFORMATION

Polish

EXCELLENT

Symmetry

EXCELLENT

Fluorescence

NONE

Inscription(s)

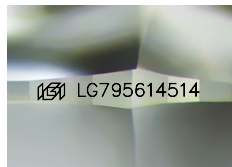
IGI LG795614514

Comments: HEARTS & ARROWS

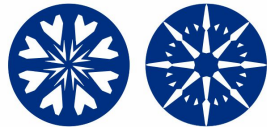
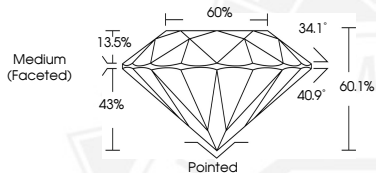
This Laboratory Grown Diamond was created by Chemical Vapor

Deposition (CVD) growth process.

Type Ila



Sample Image Used



HEARTS & ARROWS



May 13, 2026

IGI Report Number **LG795614514**

ROUND BRILLIANT

LABORATORY GROWN DIAMOND

5.46 - 5.49 X 3.29 MM

Carat Weight **0.60 CARAT**

Color Grade **D**

Clarity Grade **VS 1**

Cut Grade **IDEAL**

Polish **EXCELLENT**

Symmetry **EXCELLENT**

Fluorescence **NONE**

Inscription(s) **IGI LG795614514**

Comments: HEARTS & ARROWS This Laboratory Grown Diamond was created by Chemical Vapor Deposition (CVD) growth process. Type Ila



THIS DOCUMENT WAS PRODUCED WITH THE FOLLOWING SECURITY MEASURES: SPECIAL DOCUMENT PAPER, INK SCREENS, WATERMARK, BACKGROUND DESIGNS, HOLOGRAM AND OTHER SECURITY FEATURES NOT LISTED AND DO EXCEED DOCUMENT SECURITY INDUSTRY GUIDELINES.