



May 12, 2026

IGI Report Number LG795614506

MARQUISE BRILLIANT

LABORATORY GROWN DIAMOND

9.59 X 5.02 X 3.18 MM

Carat Weight **0.92 CARAT**

Color Grade **F**

Clarity Grade **VS 2**

Polish **VERY GOOD**

Symmetry **EXCELLENT**

Fluorescence **NONE**

Inscription(s) **IGI LG795614506**

Comments: This Laboratory Grown Diamond was created by Chemical Vapor Deposition (CVD) growth process. Type IIa

LABORATORY GROWN DIAMOND REPORT

May 12, 2026
IGI Report Number **LG795614506**
Description **LABORATORY GROWN DIAMOND**
Shape and Cutting Style **MARQUISE BRILLIANT**
Measurements **9.59 X 5.02 X 3.18 MM**

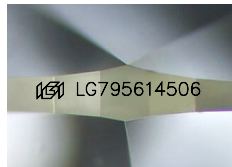
GRADING RESULTS

Carat Weight **0.92 CARAT**
Color Grade **F**
Clarity Grade **VS 2**

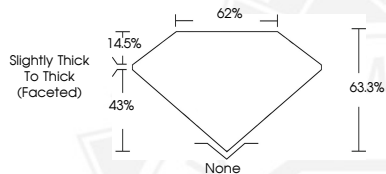
ADDITIONAL GRADING INFORMATION

Polish **VERY GOOD**
Symmetry **EXCELLENT**
Fluorescence **NONE**
Inscription(s) **IGI LG795614506**

Comments: This Laboratory Grown Diamond was created by Chemical Vapor Deposition (CVD) growth process. Type IIa



Sample Image Used



May 12, 2026

IGI Report Number LG795614506

MARQUISE BRILLIANT

LABORATORY GROWN DIAMOND

9.59 X 5.02 X 3.18 MM

Carat Weight **0.92 CARAT**

Color Grade **F**

Clarity Grade **VS 2**

Polish **VERY GOOD**

Symmetry **EXCELLENT**

Fluorescence **NONE**

Inscription(s) **IGI LG795614506**

Comments: This Laboratory Grown Diamond was created by Chemical Vapor Deposition (CVD) growth process. Type IIa



THIS DOCUMENT WAS PRODUCED WITH THE FOLLOWING SECURITY MEASURES: SPECIAL DOCUMENT PAPER, INK SCREENS, WATERMARK, BACKGROUND DESIGNS, HOLOGRAM AND OTHER SECURITY FEATURES NOT LISTED AND DO EXCEED DOCUMENT SECURITY INDUSTRY GUIDELINES.