



May 11, 2026

IGI Report Number **LG795614345**

ROUND BRILLIANT

LABORATORY GROWN DIAMOND

6.23 - 6.31 X 3.76 MM

Carat Weight	0.97 CARAT
Color Grade	F
Clarity Grade	VS 2
Cut Grade	FAIR
Polish	VERY GOOD
Symmetry	GOOD
Fluorescence	NONE
Inscription(s)	IGI LG795614345

Comments: This Laboratory Grown Diamond was created by Chemical Vapor Deposition (CVD) growth process. Type IIa

LABORATORY GROWN DIAMOND REPORT

May 11, 2026

IGI Report Number

LG795614345

Description

LABORATORY GROWN DIAMOND

Shape and Cutting Style

ROUND BRILLIANT

Measurements

6.23 - 6.31 X 3.76 MM

GRADING RESULTS

Carat Weight

0.97 CARAT

Color Grade

F

Clarity Grade

VS 2

Cut Grade

FAIR

ADDITIONAL GRADING INFORMATION

Polish

VERY GOOD

Symmetry

GOOD

Fluorescence

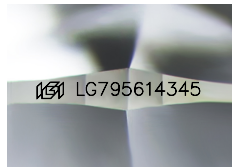
NONE

Inscription(s)

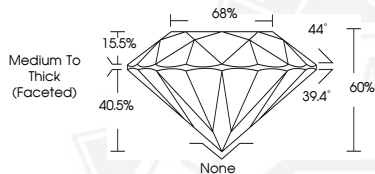
IGI LG795614345

Comments: This Laboratory Grown Diamond was created by Chemical Vapor Deposition (CVD) growth process.

Type IIa



Sample Image Used



May 11, 2026

IGI Report Number **LG795614345**

ROUND BRILLIANT

LABORATORY GROWN DIAMOND

6.23 - 6.31 X 3.76 MM

Carat Weight	0.97 CARAT
Color Grade	F
Clarity Grade	VS 2
Cut Grade	FAIR
Polish	VERY GOOD
Symmetry	GOOD
Fluorescence	NONE
Inscription(s)	IGI LG795614345

Comments: This Laboratory Grown Diamond was created by Chemical Vapor Deposition (CVD) growth process. Type IIa



THIS DOCUMENT WAS PRODUCED WITH THE FOLLOWING SECURITY MEASURES: SPECIAL DOCUMENT PAPER, INK SCREENS, WATERMARK, BACKGROUND DESIGNS, HOLOGRAM AND OTHER SECURITY FEATURES NOT LISTED AND DO EXCEED DOCUMENT SECURITY INDUSTRY GUIDELINES.