



ELECTRONIC COPY

LG795614165 Report verification at igi.org



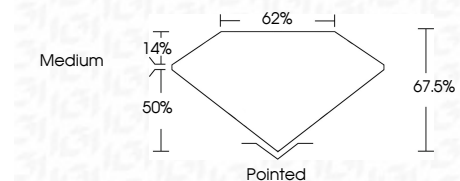
April 27, 2026 IGI Report Number LG795614165 Description LABORATORY GROWN DIAMOND

Shape and Cutting Style CUT CORNERED RECTANGULAR MODIFIED BRILLIANT

Measurements 6.98 X 5.08 X 3.43 MM

GRADING RESULTS

Carat Weight 1.06 CARAT Color Grade D Clarity Grade VVS 2



ADDITIONAL GRADING INFORMATION

Polish EXCELLENT Symmetry EXCELLENT Fluorescence NONE Inscription(s) IGI LG795614165

Comments: This Laboratory Grown Diamond was created by Chemical Vapor Deposition (CVD) growth process. Type IIa



April 27, 2026 IGI Report Number LG795614165 Description LABORATORY GROWN DIAMOND Shape and Cutting Style CUT CORNERED RECTANGULAR MODIFIED BRILLIANT Measurements 6.98 X 5.08 X 3.43 MM

GRADING RESULTS

Carat Weight 1.06 CARAT Color Grade D Clarity Grade VVS 2

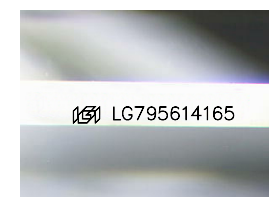
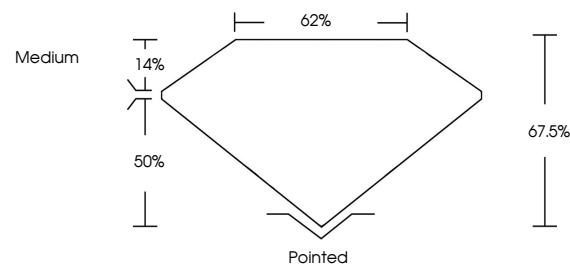
ADDITIONAL GRADING INFORMATION

Polish EXCELLENT Symmetry EXCELLENT Fluorescence NONE

Inscription(s) IGI LG795614165

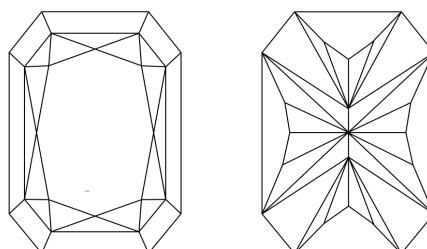
Comments: This Laboratory Grown Diamond was created by Chemical Vapor Deposition (CVD) growth process. Type IIa

PROPORTIONS



Sample Image Used

CLARITY CHARACTERISTICS



KEY TO SYMBOLS

Red symbols indicate internal characteristics. Green symbols indicate external characteristics.

COLOR

D E F G H I J Faint Very Light Light

CLARITY

FL IF VVS 1-2 VS 1-2 SI 1-2 I 1-3 Flawless Internally Flawless Very Very Slightly Included Very Slightly Included Slightly Included Included



April 27, 2026 IGI Report No LG795614165 CUT CORNERED RECT. MODIFIED BRILLIANT 6.98 X 5.08 X 3.43 MM 1.06 CARAT D VVS 2 67.5% 62% Medium Pointed EXCELLENT EXCELLENT NONE IGI LG795614165 Comments: This Laboratory Grown Diamond was created by Chemical Vapor Deposition (CVD) growth process. Type IIa