



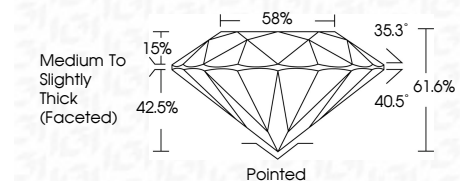
ELECTRONIC COPY

LG795614020
Report verification at igi.org



May 8, 2026
IGI Report Number **LG795614020**
Description **LABORATORY GROWN DIAMOND**
Shape and Cutting Style **ROUND BRILLIANT**
Measurements **9.26 - 9.28 X 5.72 MM**

GRADING RESULTS
Carat Weight **3.05 CARATS**
Color Grade **G**
Clarity Grade **VVS 2**
Cut Grade **IDEAL**



ADDITIONAL GRADING INFORMATION
Polish **VERY GOOD**
Symmetry **EXCELLENT**
Fluorescence **NONE**
Inscription(s) **IGI LG795614020**
Comments: This Laboratory Grown Diamond was created by Chemical Vapor Deposition (CVD) growth process. Type IIa



May 8, 2026
IGI Report No LG795614020
ROUND BRILLIANT
9.26 - 9.28 X 5.72 MM
3.05 CARATS
G
VVS 2
IDEAL
61.6%
58%
Medium To Slightly Thick (Faceted)
Pointed
VERY GOOD
EXCELLENT
NONE
IGI LG795614020
Comments: This Laboratory Grown Diamond was created by Chemical Vapor Deposition (CVD) growth process. Type IIa

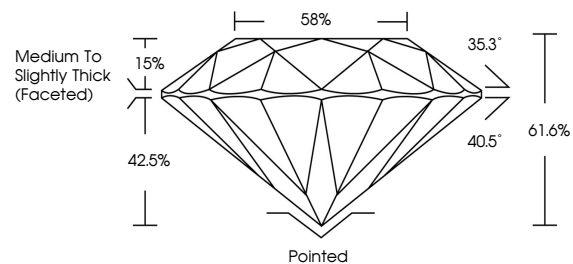
May 8, 2026
IGI Report Number **LG795614020**
Description **LABORATORY GROWN DIAMOND**
Shape and Cutting Style **ROUND BRILLIANT**
Measurements **9.26 - 9.28 X 5.72 MM**

GRADING RESULTS
Carat Weight **3.05 CARATS**
Color Grade **G**
Clarity Grade **VVS 2**
Cut Grade **IDEAL**

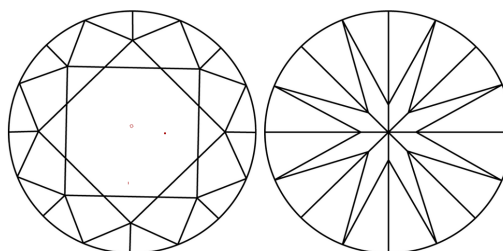
ADDITIONAL GRADING INFORMATION
Polish **VERY GOOD**
Symmetry **EXCELLENT**
Fluorescence **NONE**
Inscription(s) **IGI LG795614020**

Comments: This Laboratory Grown Diamond was created by Chemical Vapor Deposition (CVD) growth process. Type IIa

PROPORTIONS

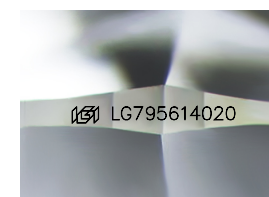


CLARITY CHARACTERISTICS



KEY TO SYMBOLS

Red symbols indicate internal characteristics.
Green symbols indicate external characteristics.



Sample Image Used

COLOR

D E F G H I J Faint Very Light Light

CLARITY

FL	IF	VVS ¹⁻²	VS ¹⁻²	SI ¹⁻²	I ¹⁻³
Flawless	Internally Flawless	Very Very Slightly Included	Very Slightly Included	Slightly Included	Included

