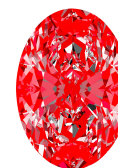




**Light Performance Grade: Exceptional**



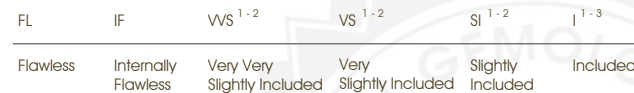
**Structured Light Environment Representation**



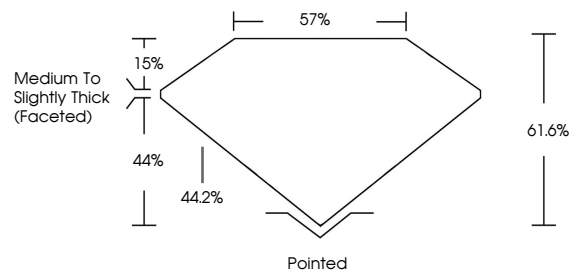
**COLOR**



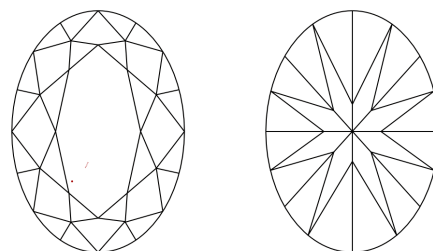
**CLARITY**



**PROPORTIONS**



**CLARITY CHARACTERISTICS**



**KEY TO SYMBOLS**

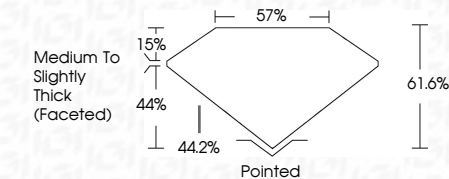
Red symbols indicate internal characteristics.  
Green symbols indicate external characteristics.



Sample Image Used



April 25, 2026  
 IGI Report Number **LG795613995**  
 Description **LABORATORY GROWN DIAMOND**  
 Shape and Cutting Style **OVAL BRILLIANT**  
 Measurements **13.08 X 9.14 X 5.63 MM**  
**GRADING RESULTS**  
 Carat Weight **4.16 CARATS**  
 Color Grade **E**  
 Clarity Grade **VVS 2**



**ADDITIONAL GRADING INFORMATION**

Polish **EXCELLENT**  
 Symmetry **EXCELLENT**  
 Fluorescence **NONE**  
 Inscription(s) **IGI LG795613995**  
 Comments: This Laboratory Grown Diamond was created by Chemical Vapor Deposition (CVD) growth process.  
 Type IIa



**IGI**

April 25, 2026  
 IGI Report No LG795613995  
**OVAL BRILLIANT**  
 13.08 X 9.14 X 5.63 MM  
 Carat Weight **4.16 CARATS**  
 Color Grade **E**  
 Clarity Grade **VVS 2**  
 Table **61.6%**  
 Girdle **57%**  
 Medium To Slightly Thick (Faceted)  
 Culet **Pointed**  
 Polish **EXCELLENT**  
 Symmetry **EXCELLENT**  
 Fluorescence **NONE**  
 Inscription(s) **IGI LG795613995**  
 Comments: This Laboratory Grown Diamond was created by Chemical Vapor Deposition (CVD) growth process.  
 Type IIa