



ELECTRONIC COPY

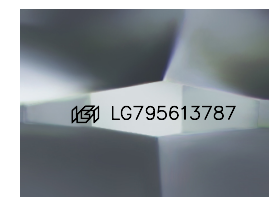
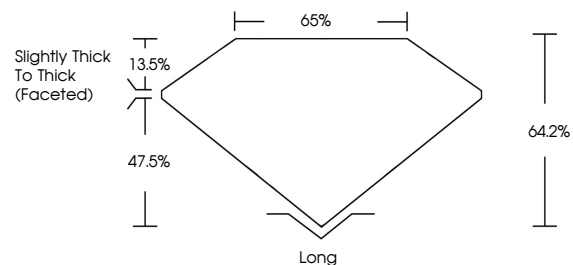
LG795613787
Report verification at igi.org



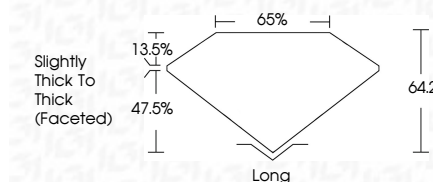
April 25, 2026
IGI Report Number **LG795613787**
Description **LABORATORY GROWN DIAMOND**
Shape and Cutting Style **RECTANGULAR CUSHION MIXED CUT**
Measurements **10.90 X 7.44 X 4.78 MM**
GRADING RESULTS
Carat Weight **3.77 CARATS**
Color Grade **E**
Clarity Grade **VVS 1**

April 25, 2026
IGI Report Number **LG795613787**
Description **LABORATORY GROWN DIAMOND**
Shape and Cutting Style **RECTANGULAR CUSHION MIXED CUT**
Measurements **10.90 X 7.44 X 4.78 MM**
GRADING RESULTS
Carat Weight **3.77 CARATS**
Color Grade **E**
Clarity Grade **VVS 1**

PROPORTIONS



Sample Image Used



ADDITIONAL GRADING INFORMATION

Polish **EXCELLENT**
Symmetry **EXCELLENT**
Fluorescence **NONE**
Inscription(s) **IGI LG795613787**

Comments: This Laboratory Grown Diamond was created by Chemical Vapor Deposition (CVD) growth process. Type IIa

ADDITIONAL GRADING INFORMATION

Polish **EXCELLENT**
Symmetry **EXCELLENT**
Fluorescence **NONE**
Inscription(s) **IGI LG795613787**
Comments: This Laboratory Grown Diamond was created by Chemical Vapor Deposition (CVD) growth process. Type IIa

COLOR

D E F G H I J Faint Very Light Light

CLARITY

FL	IF	VVS ¹⁻²	VS ¹⁻²	SI ¹⁻²	I ¹⁻³
Flawless	Internally Flawless	Very Very Slightly Included	Very Slightly Included	Slightly Included	Included



IGI



April 25, 2026
IGI Report No LG795613787
RECTANGULAR CUSHION MIXED CUT
10.90 X 7.44 X 4.78 MM
Carat Weight **3.77 CARATS**
Color Grade **E**
Clarity Grade **VVS 1**
Depth **47.5%**
Table **13.5%**
Girdle **Slightly Thick To Thick (Faceted)**
Culet **Long**
Polish **EXCELLENT**
Symmetry **EXCELLENT**
Fluorescence **NONE**
Inscription(s) **IGI LG795613787**
Comments: This Laboratory Grown Diamond was created by Chemical Vapor Deposition (CVD) growth process. Type IIa