



ELECTRONIC COPY

LG795613554
Report verification at igi.org



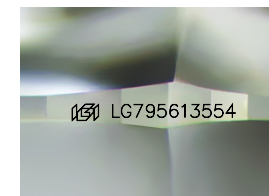
May 8, 2026

IGI Report Number **LG795613554**
Description **LABORATORY GROWN DIAMOND**
Shape and Cutting Style **SQUARE CUSHION MODIFIED
BRILLIANT**

Measurements **6.15 X 6.12 X 4.52 MM**

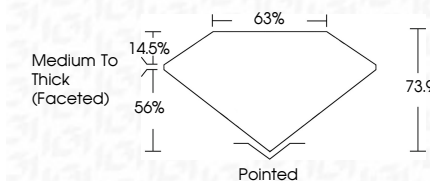
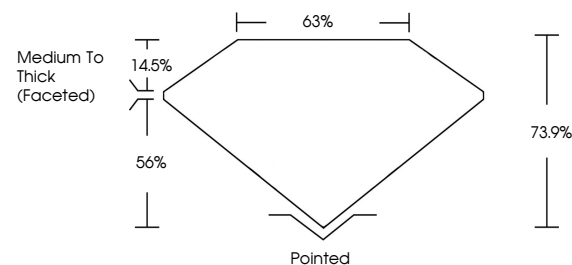
GRADING RESULTS

Carat Weight **1.57 CARAT**
Color Grade **FANCY VIVID YELLOW**
Clarity Grade **VVS 2**



Sample Image Used

PROPORTIONS



May 8, 2026
IGI Report Number **LG795613554**

Description **LABORATORY GROWN DIAMOND**

Shape and Cutting Style **SQUARE CUSHION MODIFIED
BRILLIANT**

Measurements **6.15 X 6.12 X 4.52 MM**

GRADING RESULTS

Carat Weight **1.57 CARAT**

Color Grade **FANCY VIVID YELLOW**

Clarity Grade **VVS 2**

ADDITIONAL GRADING INFORMATION

Polish **EXCELLENT**

Symmetry **EXCELLENT**

Fluorescence **NONE**

Inscription(s) **IGI LG795613554**

Comments: As Grown - No indication of post-growth treatment.
This Laboratory Grown Diamond was created by High Pressure High Temperature (HPHT) growth process.

COLOR

D E F G H I J Faint Very Light Light

CLARITY

FL	IF	VVS ¹⁻²	VS ¹⁻²	SI ¹⁻²	I ¹⁻³
Flawless	Internally Flawless	Very Very Slightly Included	Very Slightly Included	Slightly Included	Included

ADDITIONAL GRADING INFORMATION

Polish **EXCELLENT**

Symmetry **EXCELLENT**

Fluorescence **NONE**

Inscription(s) **IGI LG795613554**

Comments: As Grown - No indication of post-growth treatment.
This Laboratory Grown Diamond was created by High Pressure High Temperature (HPHT) growth process.



IGI



May 8, 2026
IGI Report No. LG795613554
SQUARE CUSHION MODIFIED BRILLIANT
6.15 X 6.12 X 4.52 MM
1.57 CARAT
Color Grade **FANCY VIVID YELLOW**
Clarity Grade **VVS 2**
Table **63%**
Depth **14.5%**
Girdle **Medium To Thick (Faceted)**
Culet **Pointed**
Polish **EXCELLENT**
Symmetry **EXCELLENT**
Fluorescence **NONE**
Inscription(s) **IGI LG795613554**
Comments: As Grown - No indication of post-growth treatment.
This Laboratory Grown Diamond was created by High Pressure High Temperature (HPHT) growth process.