



# INTERNATIONAL GEMOLOGICAL INSTITUTE

ELECTRONIC COPY



April 26, 2026

IGI Report Number LG795612635

ROUND BRILLIANT  
LABORATORY GROWN DIAMOND  
4.67 - 4.70 X 2.84 MM

Carat Weight 0.39 CARAT  
Color Grade D  
Clarity Grade VVS 2  
Cut Grade VERY GOOD  
Polish EXCELLENT  
Symmetry EXCELLENT  
Fluorescence NONE  
Inscription(s) IGI LG795612635

Comments: As Grown - No indication of post-growth treatment. This Laboratory Grown Diamond was created by High Pressure High Temperature (HPHT) growth process. Type II

## LABORATORY GROWN DIAMOND REPORT

April 26, 2026  
IGI Report Number LG795612635  
Description LABORATORY GROWN DIAMOND  
Shape and Cutting Style ROUND BRILLIANT  
Measurements 4.67 - 4.70 X 2.84 MM

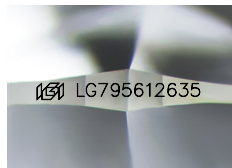
### GRADING RESULTS

Carat Weight 0.39 CARAT  
Color Grade D  
Clarity Grade VVS 2  
Cut Grade VERY GOOD

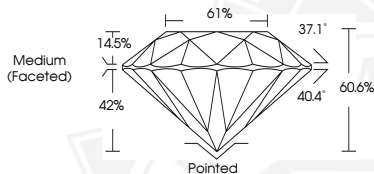
### ADDITIONAL GRADING INFORMATION

Polish EXCELLENT  
Symmetry EXCELLENT  
Fluorescence NONE  
Inscription(s) IGI LG795612635

Comments: As Grown - No indication of post-growth treatment. This Laboratory Grown Diamond was created by High Pressure High Temperature (HPHT) growth process. Type II



Sample Image Used



April 26, 2026

IGI Report Number LG795612635

ROUND BRILLIANT  
LABORATORY GROWN DIAMOND  
4.67 - 4.70 X 2.84 MM

Carat Weight 0.39 CARAT  
Color Grade D  
Clarity Grade VVS 2  
Cut Grade VERY GOOD  
Polish EXCELLENT  
Symmetry EXCELLENT  
Fluorescence NONE  
Inscription(s) IGI LG795612635

Comments: As Grown - No indication of post-growth treatment. This Laboratory Grown Diamond was created by High Pressure High Temperature (HPHT) growth process. Type II



THIS DOCUMENT WAS PRODUCED WITH THE FOLLOWING SECURITY MEASURES: SPECIAL DOCUMENT PAPER, INK SCREENS, WATERMARK, BACKGROUND DESIGNS, HOLOGRAM AND OTHER SECURITY FEATURES NOT LISTED AND DO EXCEED DOCUMENT SECURITY INDUSTRY GUIDELINES.

For terms & conditions and to verify this report, please visit [www.igi.org](http://www.igi.org)