



ELECTRONIC COPY

LG795610853
Report verification at igi.org



April 29, 2026
IGI Report Number LG795610853
Description LABORATORY GROWN DIAMOND
Shape and Cutting Style CUSHION MODIFIED BRILLIANT
Measurements 6.49 X 5.38 X 3.15 MM
GRADING RESULTS
Carat Weight 1.01 CARAT
Color Grade FANCY INTENSE YELLOW
Clarity Grade VS 1

LABORATORY GROWN DIAMOND REPORT

April 29, 2026
IGI Report Number LG795610853
Description LABORATORY GROWN DIAMOND
Shape and Cutting Style CUSHION MODIFIED BRILLIANT
Measurements 6.49 X 5.38 X 3.15 MM

GRADING RESULTS

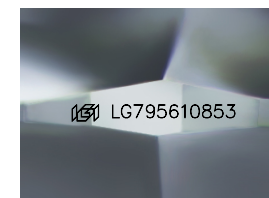
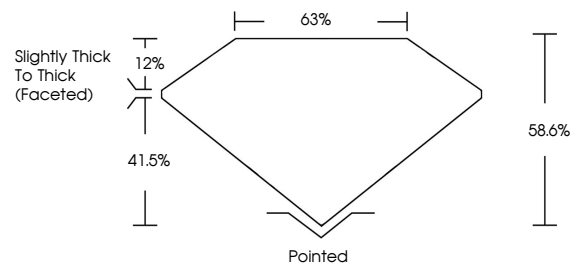
Carat Weight 1.01 CARAT
Color Grade FANCY INTENSE YELLOW
Clarity Grade VS 1

ADDITIONAL GRADING INFORMATION

Polish EXCELLENT
Symmetry VERY GOOD
Fluorescence NONE
Inscription(s) IGI LG795610853

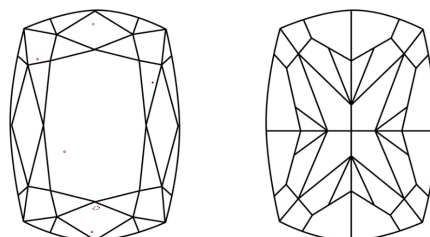
Comments: This Laboratory Grown Diamond was created by Chemical Vapor Deposition (CVD) growth process.

PROPORTIONS



Sample Image Used

CLARITY CHARACTERISTICS



KEY TO SYMBOLS

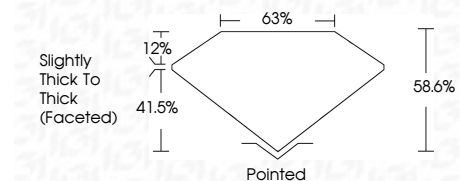
Red symbols indicate internal characteristics.
Green symbols indicate external characteristics.

COLOR

D E F G H I J Faint Very Light Light

CLARITY

FL IF VS 1-2 VS 2-3 SI 1-2 I 1-3
Flawless Internally Flawless Very Very Slightly Included Very Slightly Included Slightly Included Included



ADDITIONAL GRADING INFORMATION

Polish EXCELLENT
Symmetry VERY GOOD
Fluorescence NONE
Inscription(s) IGI LG795610853
Comments: This Laboratory Grown Diamond was created by Chemical Vapor Deposition (CVD) growth process.



April 29, 2026
IGI Report No LG795610853
CUSHION MODIFIED BRILLIANT
6.49 X 5.38 X 3.15 MM
1.01 CARAT
FANCY INTENSE YELLOW
VS 1
68.6%
63%
Slightly Thick To Thick (Faceted)
Pointed
EXCELLENT
VERY GOOD
NONE
IGI LG795610853
Comments: This Laboratory Grown Diamond was created by Chemical Vapor Deposition (CVD) growth process.