



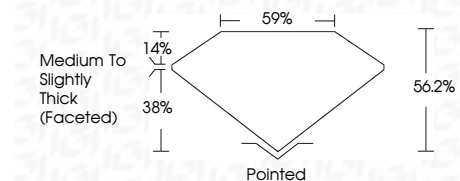
**ELECTRONIC COPY**

LG795610818  
Report verification at igi.org



April 29, 2026  
IGI Report Number **LG795610818**  
Description **LABORATORY GROWN DIAMOND**  
Shape and Cutting Style **TRIANGULAR BRILLIANT**  
Measurements **7.34 X 7.33 X 4.12 MM**

**GRADING RESULTS**  
Carat Weight **1.22 CARAT**  
Color Grade **F**  
Clarity Grade **VVS 2**



**ADDITIONAL GRADING INFORMATION**  
Polish **EXCELLENT**  
Symmetry **EXCELLENT**  
Fluorescence **NONE**  
Inscription(s) **IGI LG795610818**  
Comments: This Laboratory Grown Diamond was created by Chemical Vapor Deposition (CVD) growth process. Type IIa



April 29, 2026  
IGI Report No LG795610818  
**TRIANGULAR BRILLIANT**  
7.34 X 7.33 X 4.12 MM  
1.22 CARAT  
F  
VVS 2  
56.2%  
38%  
14%  
Medium to Slightly Thick (Faceted)  
Pointed  
EXCELLENT  
EXCELLENT  
NONE  
IGI LG795610818  
Comments: This Laboratory Grown Diamond was created by Chemical Vapor Deposition (CVD) growth process. Type IIa

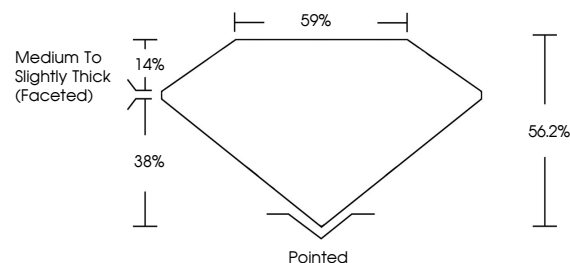
April 29, 2026  
IGI Report Number **LG795610818**  
Description **LABORATORY GROWN DIAMOND**  
Shape and Cutting Style **TRIANGULAR BRILLIANT**  
Measurements **7.34 X 7.33 X 4.12 MM**

**GRADING RESULTS**  
Carat Weight **1.22 CARAT**  
Color Grade **F**  
Clarity Grade **VVS 2**

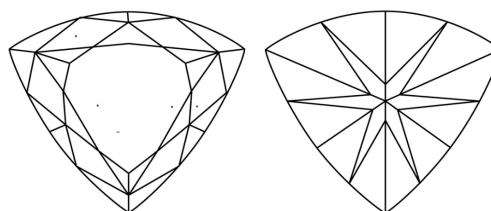
**ADDITIONAL GRADING INFORMATION**  
Polish **EXCELLENT**  
Symmetry **EXCELLENT**  
Fluorescence **NONE**  
Inscription(s) **IGI LG795610818**

Comments: This Laboratory Grown Diamond was created by Chemical Vapor Deposition (CVD) growth process. Type IIa

**PROPORTIONS**

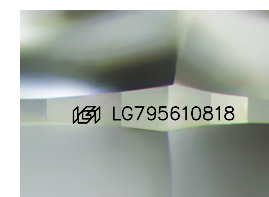


**CLARITY CHARACTERISTICS**



**KEY TO SYMBOLS**

Red symbols indicate internal characteristics.  
Green symbols indicate external characteristics.



Sample Image Used

**COLOR**

D E F G H I J Faint Very Light Light

**CLARITY**

FL	IF	VVS <sup>1-2</sup>	VS <sup>1-2</sup>	SI <sup>1-2</sup>	I <sup>1-3</sup>
Flawless	Internally Flawless	Very Very Slightly Included	Very Slightly Included	Slightly Included	Included

