



April 23, 2026

IGI Report Number **LG795610772**

**EMERALD CUT  
LABORATORY GROWN DIAMOND**

**6.41 X 4.43 X 3.00 MM**

Carat Weight **0.84 CARAT**  
Color Grade **D**  
Clarity Grade **VVS 1**  
Polish **EXCELLENT**  
Symmetry **EXCELLENT**  
Fluorescence **NONE**  
Inscription(s) **IGI LG795610772**

Comments: This Laboratory Grown Diamond was created by Chemical Vapor Deposition (CVD) growth process. Type IIa

**LABORATORY GROWN DIAMOND REPORT**

April 23, 2026  
IGI Report Number **LG795610772**  
Description **LABORATORY GROWN DIAMOND**  
Shape and Cutting Style **EMERALD CUT**  
Measurements **6.41 X 4.43 X 3.00 MM**

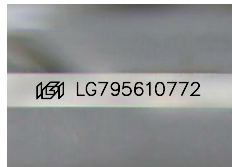
**GRADING RESULTS**

Carat Weight **0.84 CARAT**  
Color Grade **D**  
Clarity Grade **VVS 1**

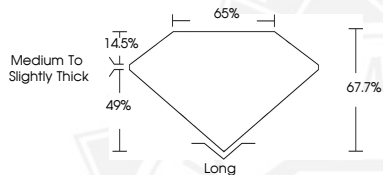
**ADDITIONAL GRADING INFORMATION**

Polish **EXCELLENT**  
Symmetry **EXCELLENT**  
Fluorescence **NONE**  
Inscription(s) **IGI LG795610772**

Comments: This Laboratory Grown Diamond was created by Chemical Vapor Deposition (CVD) growth process. Type IIa



Sample Image Used



April 23, 2026

IGI Report Number **LG795610772**

**EMERALD CUT  
LABORATORY GROWN DIAMOND**

**6.41 X 4.43 X 3.00 MM**

Carat Weight **0.84 CARAT**  
Color Grade **D**  
Clarity Grade **VVS 1**  
Polish **EXCELLENT**  
Symmetry **EXCELLENT**  
Fluorescence **NONE**  
Inscription(s) **IGI LG795610772**

Comments: This Laboratory Grown Diamond was created by Chemical Vapor Deposition (CVD) growth process. Type IIa



THIS DOCUMENT WAS PRODUCED WITH THE FOLLOWING SECURITY MEASURES: SPECIAL DOCUMENT PAPER, INK SCREENS, WATERMARK, BACKGROUND DESIGNS, HOLOGRAM AND OTHER SECURITY FEATURES NOT LISTED AND DO EXCEED DOCUMENT SECURITY INDUSTRY GUIDELINES.