



ELECTRONIC COPY

LG795608086 Report verification at igi.org



April 28, 2026 IGI Report Number LG795608086 Description LABORATORY GROWN DIAMOND Shape and Cutting Style ROUND BRILLIANT Measurements 6.43 - 6.47 X 3.94 MM GRADING RESULTS Carat Weight 1.00 CARAT Color Grade FANCY YELLOW Clarity Grade VS 2 Cut Grade IDEAL

April 28, 2026 IGI Report Number LG795608086 Description LABORATORY GROWN DIAMOND Shape and Cutting Style ROUND BRILLIANT Measurements 6.43 - 6.47 X 3.94 MM

GRADING RESULTS

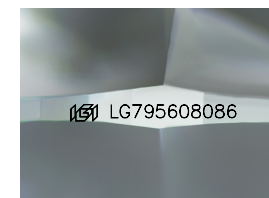
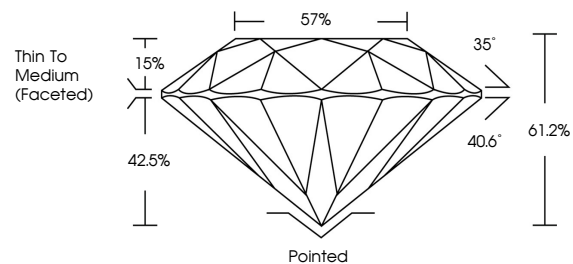
Carat Weight 1.00 CARAT Color Grade FANCY YELLOW Clarity Grade VS 2 Cut Grade IDEAL

ADDITIONAL GRADING INFORMATION

Polish EXCELLENT Symmetry EXCELLENT Fluorescence NONE Inscription(s) IGI LG795608086

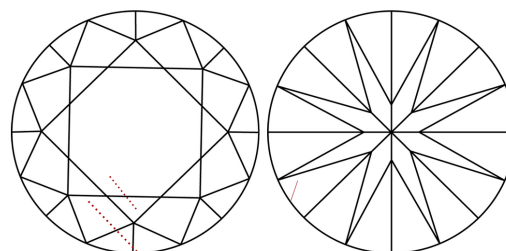
Comments: This Laboratory Grown Diamond was created by Chemical Vapor Deposition (CVD) growth process.

PROPORTIONS



Sample Image Used

CLARITY CHARACTERISTICS



KEY TO SYMBOLS

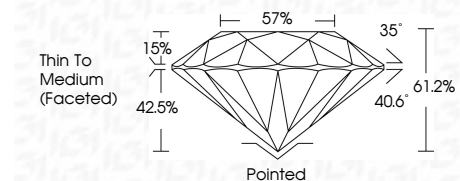
Red symbols indicate internal characteristics. Green symbols indicate external characteristics.

COLOR

D E F G H I J Faint Very Light Light

CLARITY

FL IF VS 1-2 VS 1-2 SI 1-2 I 1-3 Flawless Internally Flawless Very Very Slightly Included Very Slightly Included Slightly Included Included



ADDITIONAL GRADING INFORMATION

Polish EXCELLENT Symmetry EXCELLENT Fluorescence NONE Inscription(s) IGI LG795608086 Comments: This Laboratory Grown Diamond was created by Chemical Vapor Deposition (CVD) growth process.



Summary of report details including date, report number, description, measurements, grading results, and additional information.