



**ELECTRONIC COPY**

LG795603314  
Report verification at igi.org



June 11, 2026

IGI Report Number **LG795603314**

Description **LABORATORY GROWN DIAMOND**

Shape and Cutting Style **OLD EUROPEAN CUT**

Measurements **8.94 - 9.06 X 5.76 MM**

**GRADING RESULTS**

Carat Weight **2.88 CARATS**

Color Grade **F**

Clarity Grade **VVS 2**

June 11, 2026

IGI Report Number **LG795603314**

Description **LABORATORY GROWN DIAMOND**

Shape and Cutting Style **OLD EUROPEAN CUT**

Measurements **8.94 - 9.06 X 5.76 MM**

**GRADING RESULTS**

Carat Weight **2.88 CARATS**

Color Grade **F**

Clarity Grade **VVS 2**

**ADDITIONAL GRADING INFORMATION**

Polish **EXCELLENT**

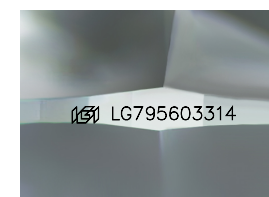
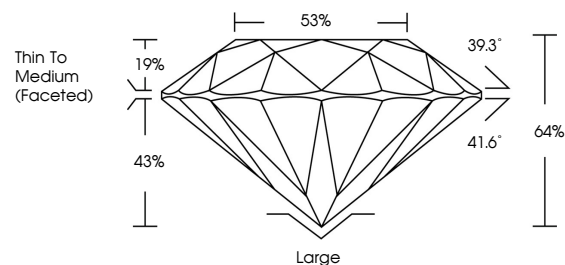
Symmetry **EXCELLENT**

Fluorescence **NONE**

Inscription(s) **IGI LG795603314**

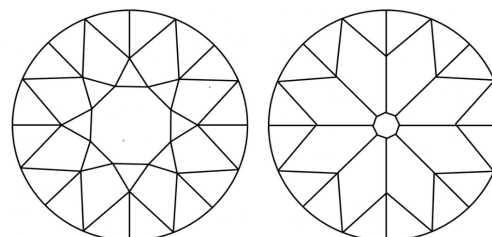
Comments: This Laboratory Grown Diamond was created by Chemical Vapor Deposition (CVD) growth process.  
Type IIa

**PROPORTIONS**



Sample Image Used

**CLARITY CHARACTERISTICS**



**KEY TO SYMBOLS**

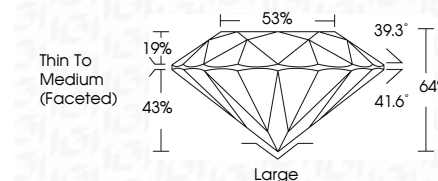
Red symbols indicate internal characteristics.  
Green symbols indicate external characteristics.

**COLOR**

D E F G H I J Faint Very Light Light

**CLARITY**

FL	IF	VVS <sup>1-2</sup>	VS <sup>1-2</sup>	SI <sup>1-2</sup>	I <sup>1-3</sup>
Flawless	Internally Flawless	Very Very Slightly Included	Very Slightly Included	Slightly Included	Included



**ADDITIONAL GRADING INFORMATION**

Polish **EXCELLENT**

Symmetry **EXCELLENT**

Fluorescence **NONE**

Inscription(s) **IGI LG795603314**

Comments: This Laboratory Grown Diamond was created by Chemical Vapor Deposition (CVD) growth process.  
Type IIa



**IGI**



June 11, 2026  
IGI Report No LG795603314  
OLD EUROPEAN CUT  
8.94 - 9.06 X 5.76 MM  
2.88 CARATS  
F  
VVS 2  
64%  
53%  
Thin To Medium (Faceted)  
Large  
EXCELLENT  
EXCELLENT  
NONE  
IGI LG795603314

Comments: This Laboratory Grown Diamond was created by Chemical Vapor Deposition (CVD) growth process.  
Type IIa