



**ELECTRONIC COPY**

LG795602667  
Report verification at igi.org

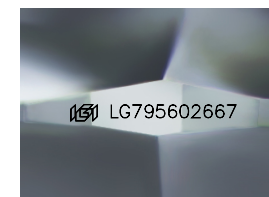


April 29, 2026  
IGI Report Number **LG795602667**  
Description **LABORATORY GROWN DIAMOND**  
Shape and Cutting Style **SQUARE CUSHION MODIFIED BRILLIANT**

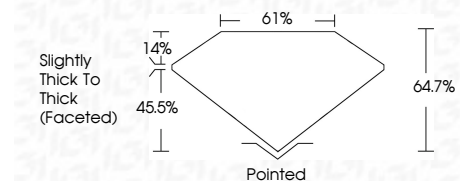
Measurements **5.72 X 5.69 X 3.68 MM**

**GRADING RESULTS**

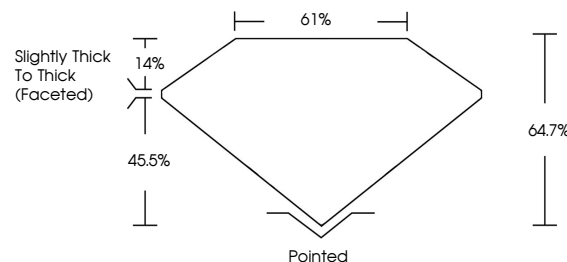
Carat Weight **0.91 CARAT**  
Color Grade **D**  
Clarity Grade **VS 1**



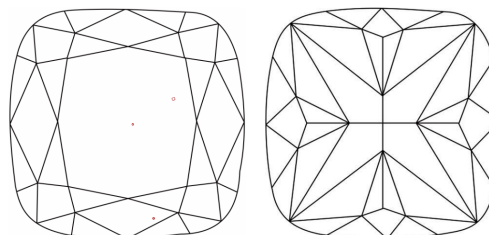
Sample Image Used



**PROPORTIONS**



**CLARITY CHARACTERISTICS**



**KEY TO SYMBOLS**

Red symbols indicate internal characteristics.  
Green symbols indicate external characteristics.

**COLOR**

D E F G H I J Faint Very Light Light

**CLARITY**

FL	IF	VS <sup>1-2</sup>	VS <sup>1-2</sup>	SI <sup>1-2</sup>	I <sup>1-3</sup>
Flawless	Internally Flawless	Very Very Slightly Included	Very Slightly Included	Slightly Included	Included

**ADDITIONAL GRADING INFORMATION**

Polish **VERY GOOD**  
Symmetry **EXCELLENT**  
Fluorescence **NONE**  
Inscription(s) **IGI LG795602667**  
Comments: This Laboratory Grown Diamond was created by Chemical Vapor Deposition (CVD) growth process. Type IIa



April 29, 2026  
IGI Report No LG795602667  
SQUARE CUSHION MODIFIED BRILLIANT  
0.91 CARAT  
D  
5.72 X 5.69 X 3.68 MM  
0.91 CARAT  
D  
VS 1  
64.7%  
45.5%  
61%  
Slightly Thick To Thick (Faceted)  
Pointed  
VERY GOOD  
EXCELLENT  
NONE  
IGI LG795602667  
Comments: This Laboratory Grown Diamond was created by Chemical Vapor Deposition (CVD) growth process. Type IIa