



ELECTRONIC COPY

LABORATORY GROWN DIAMOND REPORT

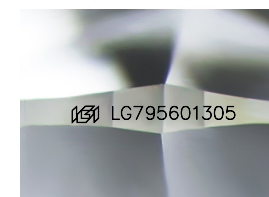
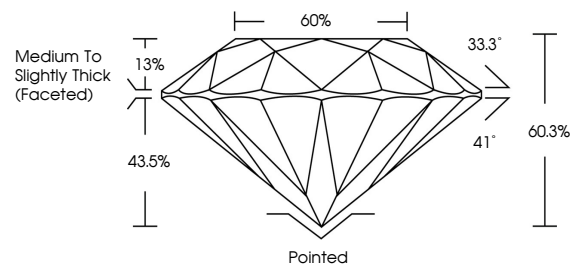
May 7, 2026 IGI Report Number LG795601305 Description LABORATORY GROWN DIAMOND Shape and Cutting Style ROUND BRILLIANT Measurements 7.39 - 7.45 X 4.47 MM GRADING RESULTS Carat Weight 1.51 CARAT Color Grade D Clarity Grade VVS 1 Cut Grade IDEAL

ADDITIONAL GRADING INFORMATION

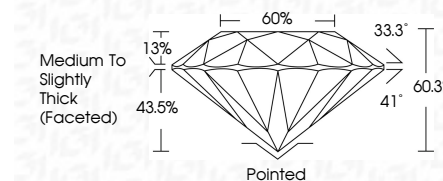
Polish EXCELLENT Symmetry EXCELLENT Fluorescence NONE Inscription(s) IGI LG795601305

Comments: HEARTS & ARROWS As Grown - No indication of post-growth treatment. This Laboratory Grown Diamond was created by High Pressure High Temperature (HPHT) growth process. Type II

PROPORTIONS



Sample Image Used



COLOR

D E F G H I J Faint Very Light Light

CLARITY

FL IF VS 1-2 VS 1-2 SI 1-2 I 1-3 Flawless Internally Flawless Very Very Slightly Included Very Slightly Included Slightly Included Included

ADDITIONAL GRADING INFORMATION

Polish EXCELLENT Symmetry EXCELLENT Fluorescence NONE Inscription(s) IGI LG795601305 Comments: HEARTS & ARROWS As Grown - No indication of post-growth treatment. This Laboratory Grown Diamond was created by High Pressure High Temperature (HPHT) growth process. Type II



May 7, 2026 IGI Report No LG795601305 ROUND BRILLIANT 7.39 - 7.45 X 4.47 MM 1.51 CARAT D VVS 1 IDEAL 60.3% 66% Medium To Slightly Thick (Faceted) Pointed EXCELLENT EXCELLENT NONE NONE IGI LG795601305 Comments: HEARTS & ARROWS As Grown - No indication of post-growth treatment. This Laboratory Grown Diamond was created by High Pressure High Temperature (HPHT) growth process. Type II



May 7, 2026 IGI Report Number LG795601305 Description LABORATORY GROWN DIAMOND Shape and Cutting Style ROUND BRILLIANT Measurements 7.39 - 7.45 X 4.47 MM GRADING RESULTS Carat Weight 1.51 CARAT Color Grade D Clarity Grade VVS 1 Cut Grade IDEAL