



ELECTRONIC COPY

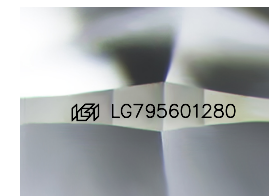
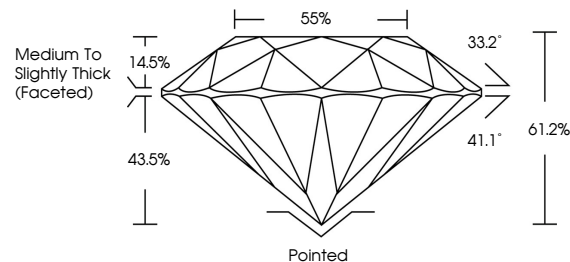
LG795601280 Report verification at igi.org



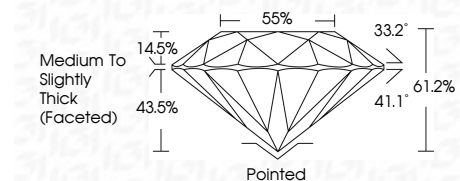
May 6, 2026 IGI Report Number LG795601280 Description LABORATORY GROWN DIAMOND Shape and Cutting Style ROUND BRILLIANT Measurements 7.34 - 7.37 X 4.51 MM GRADING RESULTS Carat Weight 1.47 CARAT Color Grade D Clarity Grade VVS 2 Cut Grade IDEAL

May 6, 2026 IGI Report Number LG795601280 Description LABORATORY GROWN DIAMOND Shape and Cutting Style ROUND BRILLIANT Measurements 7.34 - 7.37 X 4.51 MM GRADING RESULTS Carat Weight 1.47 CARAT Color Grade D Clarity Grade VVS 2 Cut Grade IDEAL

PROPORTIONS



Sample Image Used



ADDITIONAL GRADING INFORMATION

Polish EXCELLENT Symmetry EXCELLENT Fluorescence NONE Inscription(s) IGI LG795601280

Comments: As Grown - No indication of post-growth treatment. This Laboratory Grown Diamond was created by High Pressure High Temperature (HPHT) growth process. Type II

COLOR

D E F G H I J Faint Very Light Light

CLARITY

FL IF VVS 1-2 VS 1-2 SI 1-2 I 1-3 Flawless Internally Flawless Very Very Slightly Included Very Slightly Included Slightly Included Included

ADDITIONAL GRADING INFORMATION

Polish EXCELLENT Symmetry EXCELLENT Fluorescence NONE Inscription(s) IGI LG795601280 Comments: As Grown - No indication of post-growth treatment. This Laboratory Grown Diamond was created by High Pressure High Temperature (HPHT) growth process. Type II



May 6, 2026 IGI Report No LG795601280 ROUND BRILLIANT 7.34 - 7.37 X 4.51 MM 1.47 CARAT D VVS 2 IDEAL 61.2% 55% Medium To Slightly Thick (Faceted) Pointed EXCELLENT EXCELLENT NONE IGI LG795601280 Comments: As Grown - No indication of post-growth treatment. This Laboratory Grown Diamond was created by High Pressure High Temperature (HPHT) growth process. Type II