



ELECTRONIC COPY

LG794699678
Report verification at igi.org



April 29, 2026

IGI Report Number **LG794699678**

Description **LABORATORY GROWN DIAMOND**

Shape and Cutting Style **ROUND BRILLIANT**

Measurements **9.32 - 9.38 X 5.84 MM**

GRADING RESULTS

Carat Weight **3.19 CARATS**

Color Grade **F**

Clarity Grade **VS 1**

Cut Grade **IDEAL**

April 29, 2026

IGI Report Number **LG794699678**

Description **LABORATORY GROWN DIAMOND**

Shape and Cutting Style **ROUND BRILLIANT**

Measurements **9.32 - 9.38 X 5.84 MM**

GRADING RESULTS

Carat Weight **3.19 CARATS**

Color Grade **F**

Clarity Grade **VS 1**

Cut Grade **IDEAL**

ADDITIONAL GRADING INFORMATION

Polish **EXCELLENT**

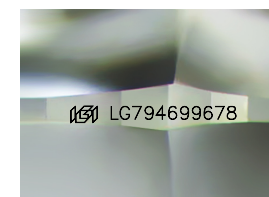
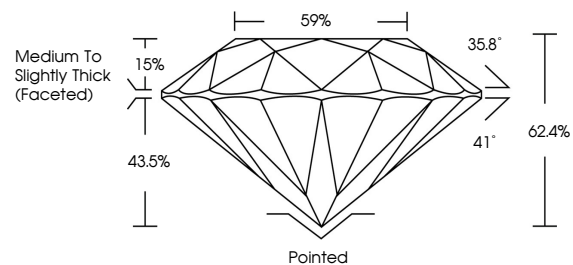
Symmetry **EXCELLENT**

Fluorescence **NONE**

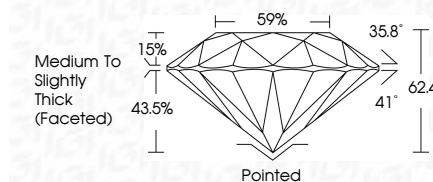
Inscription(s) **IGI LG794699678**

Comments: This Laboratory Grown Diamond was created by Chemical Vapor Deposition (CVD) growth process. Type IIa

PROPORTIONS



Sample Image Used



COLOR

D E F G H I J Faint Very Light Light

CLARITY

FL	IF	VS ¹⁻²	VS ¹⁻²	SI ¹⁻²	I ¹⁻³
Flawless	Internally Flawless	Very Very Slightly Included	Very Slightly Included	Slightly Included	Included

ADDITIONAL GRADING INFORMATION

Polish **EXCELLENT**

Symmetry **EXCELLENT**

Fluorescence **NONE**

Inscription(s) **IGI LG794699678**

Comments: This Laboratory Grown Diamond was created by Chemical Vapor Deposition (CVD) growth process. Type IIa



IGI



April 29, 2026
IGI Report No LG794699678
ROUND BRILLIANT

9.32 - 9.38 X 5.84 MM
3.19 CARATS
F
VS 1
IDEAL
62.4%
59%
Medium To Slightly Thick (Faceted)

Pointed
EXCELLENT
EXCELLENT
NONE
IGI LG794699678

Culet
Polish
Symmetry
Fluorescence
Inscription(s)

Comments: This Laboratory Grown Diamond was created by Chemical Vapor Deposition (CVD) growth process. Type IIa