



ELECTRONIC COPY

LG794699231
Report verification at igi.org



May 2, 2026

IGI Report Number **LG794699231**

Description **LABORATORY GROWN DIAMOND**

Shape and Cutting Style **ROUND BRILLIANT**

Measurements **8.79 - 8.82 X 5.40 MM**

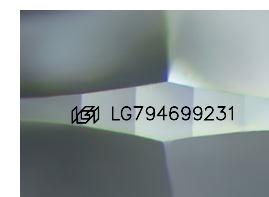
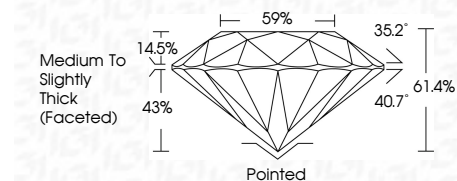
GRADING RESULTS

Carat Weight **2.60 CARATS**

Color Grade **F**

Clarity Grade **VVS 2**

Cut Grade **IDEAL**



Sample Image Used

ADDITIONAL GRADING INFORMATION

Polish **EXCELLENT**

Symmetry **EXCELLENT**

Fluorescence **NONE**

Inscription(s) **IGI LG794699231**

Comments: This Laboratory Grown Diamond was created by Chemical Vapor Deposition (CVD) growth process. Type IIa



May 2, 2026	IGI Report No LG794699231	2.60 CARATS	F	VVS 2	IDEAL	59%	Medium To Slightly Thick (Faceted)	Pointed	EXCELLENT	EXCELLENT	NONE	IGI LG794699231
ROUND BRILLIANT	8.79 - 8.82 X 5.40 MM	Carat Weight	Color Grade	Clarity Grade	Cut Grade	Depth	Table	Grille	Polish	Symmetry	Fluorescence	Inscription(s)

Comments: This Laboratory Grown Diamond was created by Chemical Vapor Deposition (CVD) growth process. Type IIa

May 2, 2026
IGI Report Number **LG794699231**
Description **LABORATORY GROWN DIAMOND**
Shape and Cutting Style **ROUND BRILLIANT**
Measurements **8.79 - 8.82 X 5.40 MM**

GRADING RESULTS

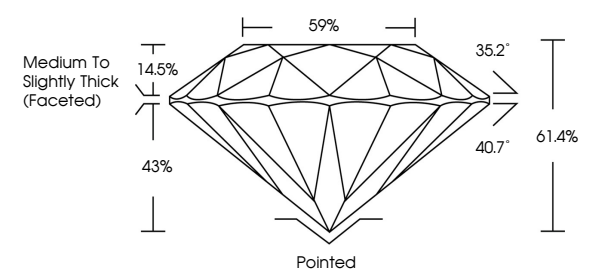
Carat Weight **2.60 CARATS**
Color Grade **F**
Clarity Grade **VVS 2**
Cut Grade **IDEAL**

ADDITIONAL GRADING INFORMATION

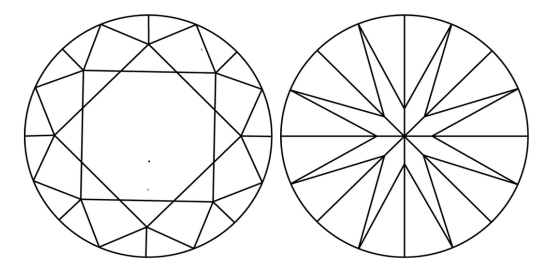
Polish **EXCELLENT**
Symmetry **EXCELLENT**
Fluorescence **NONE**
Inscription(s) **IGI LG794699231**

Comments: This Laboratory Grown Diamond was created by Chemical Vapor Deposition (CVD) growth process. Type IIa

PROPORTIONS



CLARITY CHARACTERISTICS



KEY TO SYMBOLS

Red symbols indicate internal characteristics.
Green symbols indicate external characteristics.

COLOR

D	E	F	G	H	I	J	Faint	Very Light	Light
---	---	---	---	---	---	---	-------	------------	-------

CLARITY

FL	IF	VVS ¹⁻²	VS ¹⁻²	SI ¹⁻²	I ¹⁻³
Flawless	Internally Flawless	Very Very Slightly Included	Very Slightly Included	Slightly Included	Included

