



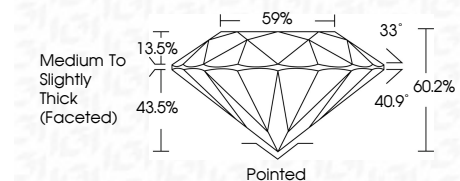
**ELECTRONIC COPY**

LG794699189  
Report verification at igi.org



May 4, 2026  
IGI Report Number **LG794699189**  
Description **LABORATORY GROWN DIAMOND**  
Shape and Cutting Style **ROUND BRILLIANT**  
Measurements **8.18 - 8.25 X 4.94 MM**

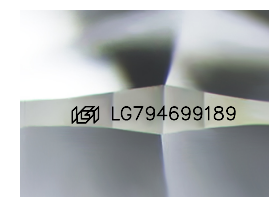
**GRADING RESULTS**  
Carat Weight **2.02 CARATS**  
Color Grade **E**  
Clarity Grade **VVS 2**  
Cut Grade **IDEAL**



**ADDITIONAL GRADING INFORMATION**  
Polish **EXCELLENT**  
Symmetry **EXCELLENT**  
Fluorescence **NONE**  
Inscription(s) **IGI LG794699189**  
Comments: This Laboratory Grown Diamond was created by Chemical Vapor Deposition (CVD) growth process. Type IIa

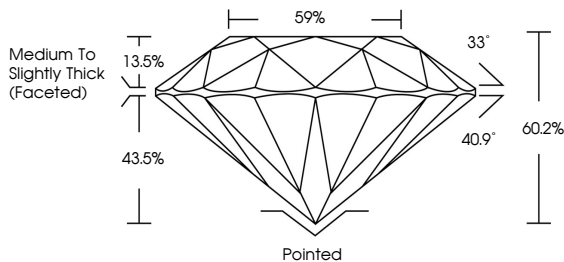


May 4, 2026  
IGI Report No **LG794699189**  
**ROUND BRILLIANT**  
**8.18 - 8.25 X 4.94 MM**  
Carat Weight **2.02 CARATS**  
Color Grade **E**  
Clarity Grade **VVS 2**  
Cut Grade **IDEAL**  
Depth **60.2%**  
Table **59%**  
Girdle **Medium To Slightly Thick (Faceted)**  
Culet **Pointed**  
Polish **EXCELLENT**  
Symmetry **EXCELLENT**  
Fluorescence **NONE**  
Inscription(s) **IGI LG794699189**  
Comments: This Laboratory Grown Diamond was created by Chemical Vapor Deposition (CVD) growth process. Type IIa

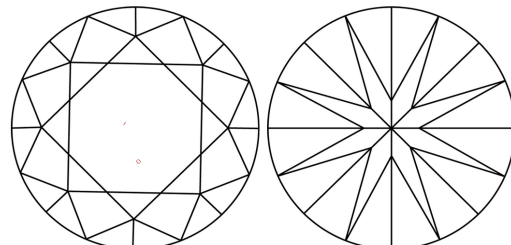


Sample Image Used

**PROPORTIONS**



**CLARITY CHARACTERISTICS**



**KEY TO SYMBOLS**  
Red symbols indicate internal characteristics.  
Green symbols indicate external characteristics.

**COLOR**

D E F G H I J Faint Very Light Light

**CLARITY**

FL	IF	VVS <sup>1-2</sup>	VS <sup>1-2</sup>	SI <sup>1-2</sup>	I <sup>1-3</sup>
Flawless	Internally Flawless	Very Very Slightly Included	Very Slightly Included	Slightly Included	Included



May 4, 2026  
IGI Report Number **LG794699189**  
Description **LABORATORY GROWN DIAMOND**  
Shape and Cutting Style **ROUND BRILLIANT**  
Measurements **8.18 - 8.25 X 4.94 MM**  
**GRADING RESULTS**  
Carat Weight **2.02 CARATS**  
Color Grade **E**  
Clarity Grade **VVS 2**  
Cut Grade **IDEAL**  
**ADDITIONAL GRADING INFORMATION**  
Polish **EXCELLENT**  
Symmetry **EXCELLENT**  
Fluorescence **NONE**  
Inscription(s) **IGI LG794699189**

Comments: This Laboratory Grown Diamond was created by Chemical Vapor Deposition (CVD) growth process. Type IIa