



**ELECTRONIC COPY**

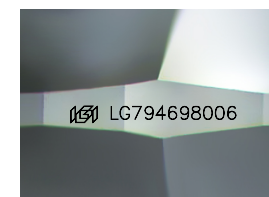
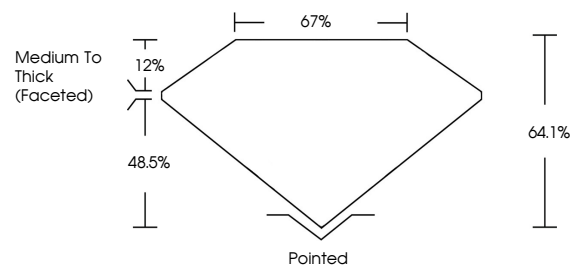
LG794698006  
Report verification at igi.org



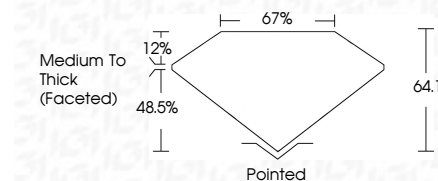
April 30, 2026  
IGI Report Number **LG794698006**  
Description **LABORATORY GROWN DIAMOND**  
Shape and Cutting Style **CUSHION MODIFIED BRILLIANT**  
Measurements **6.62 X 5.52 X 3.54 MM**  
**GRADING RESULTS**  
Carat Weight **1.04 CARAT**  
Color Grade **FANCY VIVID BLUE**  
Clarity Grade **VS 1**

April 30, 2026  
IGI Report Number **LG794698006**  
Description **LABORATORY GROWN DIAMOND**  
Shape and Cutting Style **CUSHION MODIFIED BRILLIANT**  
Measurements **6.62 X 5.52 X 3.54 MM**  
**GRADING RESULTS**  
Carat Weight **1.04 CARAT**  
Color Grade **FANCY VIVID BLUE**  
Clarity Grade **VS 1**

**PROPORTIONS**



Sample Image Used



**ADDITIONAL GRADING INFORMATION**  
Polish **VERY GOOD**  
Symmetry **VERY GOOD**  
Fluorescence **NONE**  
Inscription(s) **IGI LG794698006**

Comments: This Laboratory Grown Diamond was created by Chemical Vapor Deposition (CVD) growth process.  
Indications of post-growth treatment.

**COLOR**

D E F G H I J Faint Very Light Light

**CLARITY**

FL	IF	VS <sup>1-2</sup>	VS <sup>1-2</sup>	SI <sup>1-2</sup>	I <sup>1-3</sup>
Flawless	Internally Flawless	Very Very Slightly Included	Very Slightly Included	Slightly Included	Included

**ADDITIONAL GRADING INFORMATION**

Polish **VERY GOOD**  
Symmetry **VERY GOOD**  
Fluorescence **NONE**  
Inscription(s) **IGI LG794698006**  
Comments: This Laboratory Grown Diamond was created by Chemical Vapor Deposition (CVD) growth process.  
Indications of post-growth treatment.



April 30, 2026  
IGI Report No **LG794698006**  
**CUSHION MODIFIED BRILLIANT**  
6.62 X 5.52 X 3.54 MM  
1.04 CARAT  
FANCY VIVID BLUE  
VS 1  
64.1%  
67%  
Medium To Thick (Faceted)  
Pointed  
Polish **VERY GOOD**  
Symmetry **VERY GOOD**  
Fluorescence **NONE**  
Inscription(s) **IGI LG794698006**  
Comments: This Laboratory Grown Diamond was created by Chemical Vapor Deposition (CVD) growth process.  
Indications of post-growth treatment.