



**ELECTRONIC COPY**

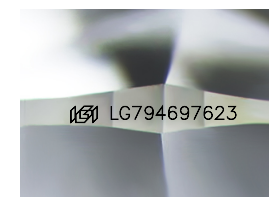
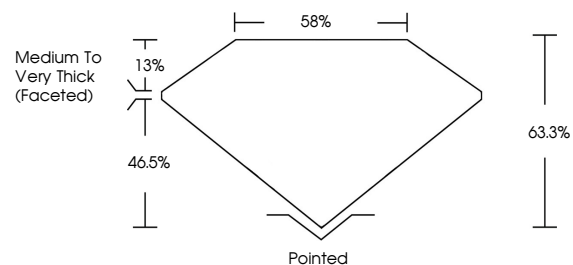
LG794697623  
Report verification at igi.org



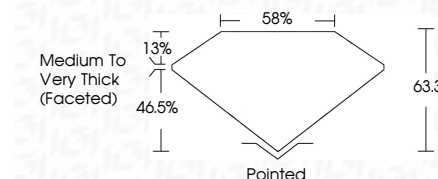
April 27, 2026  
IGI Report Number **LG794697623**  
Description **LABORATORY GROWN DIAMOND**  
Shape and Cutting Style **SQUARE CUSHION MODIFIED BRILLIANT**  
Measurements **9.07 X 9.02 X 5.71 MM**  
**GRADING RESULTS**  
Carat Weight **4.09 CARATS**  
Color Grade **FANCY YELLOW**  
Clarity Grade **VVS 2**

April 27, 2026  
IGI Report Number **LG794697623**  
Description **LABORATORY GROWN DIAMOND**  
Shape and Cutting Style **SQUARE CUSHION MODIFIED BRILLIANT**  
Measurements **9.07 X 9.02 X 5.71 MM**  
**GRADING RESULTS**  
Carat Weight **4.09 CARATS**  
Color Grade **FANCY YELLOW**  
Clarity Grade **VVS 2**

**PROPORTIONS**



Sample Image Used



**ADDITIONAL GRADING INFORMATION**

Polish **EXCELLENT**  
Symmetry **EXCELLENT**  
Fluorescence **NONE**  
Inscription(s) **IGI LG794697623**

Comments: This Laboratory Grown Diamond was created by Chemical Vapor Deposition (CVD) growth process.

**ADDITIONAL GRADING INFORMATION**

Polish **EXCELLENT**  
Symmetry **EXCELLENT**  
Fluorescence **NONE**  
Inscription(s) **IGI LG794697623**  
Comments: This Laboratory Grown Diamond was created by Chemical Vapor Deposition (CVD) growth process.

**COLOR**

D E F G H I J Faint Very Light Light

**CLARITY**

FL	IF	VVS <sup>1-2</sup>	VS <sup>1-2</sup>	SI <sup>1-2</sup>	I <sup>1-3</sup>
Flawless	Internally Flawless	Very Very Slightly Included	Very Slightly Included	Slightly Included	Included



**IGI**



April 27, 2026  
IGI Report No **LG794697623**  
**SQUARE CUSHION MODIFIED BRILLIANT**  
**4.09 CARATS**  
Carat Weight  
**FANCY YELLOW**  
Color Grade  
**VVS 2**  
Clarity Grade  
**63.3%**  
Depth  
**85%**  
Table  
Girdle  
Medium to Very Thick (Faceted)  
Culet  
Pointed  
Polish  
**EXCELLENT**  
Symmetry  
**EXCELLENT**  
Fluorescence  
**NONE**  
Inscription(s)  
**IGI LG794697623**  
Comments: This Laboratory Grown Diamond was created by Chemical Vapor Deposition (CVD) growth process.