



**ELECTRONIC COPY**

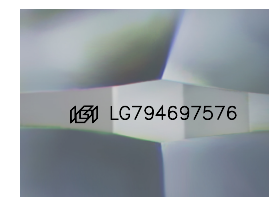
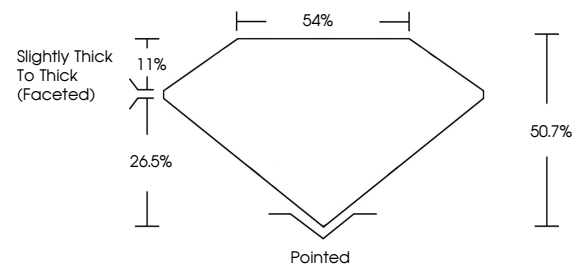
LG794697576  
Report verification at igi.org



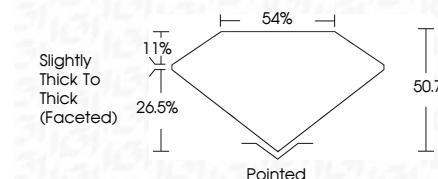
April 28, 2026  
IGI Report Number **LG794697576**  
Description **LABORATORY GROWN DIAMOND**  
Shape and Cutting Style **TRIANGULAR MODIFIED BRILLIANT**  
Measurements **6.50 X 6.90 X 3.50 MM**  
**GRADING RESULTS**  
Carat Weight **1.03 CARAT**  
Color Grade **LIGHT YELLOW**  
Clarity Grade **VVS 2**

April 28, 2026  
IGI Report Number **LG794697576**  
Description **LABORATORY GROWN DIAMOND**  
Shape and Cutting Style **TRIANGULAR MODIFIED BRILLIANT**  
Measurements **6.50 X 6.90 X 3.50 MM**  
**GRADING RESULTS**  
Carat Weight **1.03 CARAT**  
Color Grade **LIGHT YELLOW**  
Clarity Grade **VVS 2**

**PROPORTIONS**



Sample Image Used



**ADDITIONAL GRADING INFORMATION**

Polish **EXCELLENT**  
Symmetry **VERY GOOD**  
Fluorescence **NONE**  
Inscription(s) **IGI LG794697576**

Comments: This Laboratory Grown Diamond was created by Chemical Vapor Deposition (CVD) growth process.

**ADDITIONAL GRADING INFORMATION**

Polish **EXCELLENT**  
Symmetry **VERY GOOD**  
Fluorescence **NONE**  
Inscription(s) **IGI LG794697576**  
Comments: This Laboratory Grown Diamond was created by Chemical Vapor Deposition (CVD) growth process.

**COLOR**

D E F G H I J Faint Very Light Light

**CLARITY**

FL	IF	VVS <sup>1-2</sup>	VS <sup>1-2</sup>	SI <sup>1-2</sup>	I <sup>1-3</sup>
Flawless	Internally Flawless	Very Very Slightly Included	Very Slightly Included	Slightly Included	Included



**IGI**



April 28, 2026  
IGI Report No **LG794697576**  
**TRIANGULAR MODIFIED BRILLIANT**  
6.50 X 6.90 X 3.50 MM  
Carat Weight **1.03 CARAT**  
Color Grade **LIGHT YELLOW**  
Clarity Grade **VVS 2**  
Depth **60.7%**  
Table **54%**  
Girdle **Slightly Thick To Thick (Faceted)**  
Culet **Pointed**  
Polish **EXCELLENT**  
Symmetry **VERY GOOD**  
Fluorescence **NONE**  
Inscription(s) **IGI LG794697576**  
Comments: This Laboratory Grown Diamond was created by Chemical Vapor Deposition (CVD) growth process.