



**ELECTRONIC COPY**

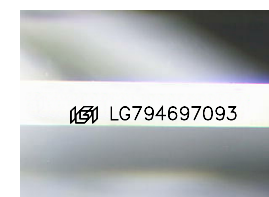
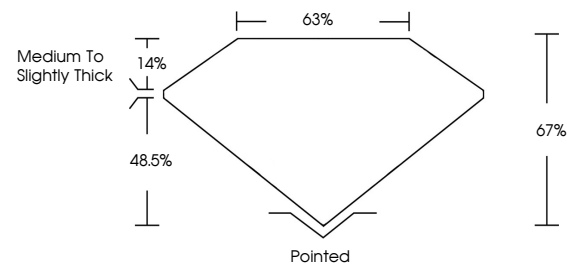
LG794697093  
Report verification at igi.org



May 9, 2026  
IGI Report Number **LG794697093**  
Description **LABORATORY GROWN DIAMOND**  
Shape and Cutting Style **CUT CORNERED  
RECTANGULAR MODIFIED  
BRILLIANT**  
Measurements **11.30 X 7.95 X 5.33 MM**  
**GRADING RESULTS**  
Carat Weight **4.15 CARATS**  
Color Grade **D**  
Clarity Grade **FLAWLESS**  
Cut Grade **EXCELLENT**

May 9, 2026  
IGI Report Number **LG794697093**  
Description **LABORATORY GROWN DIAMOND**  
Shape and Cutting Style **CUT CORNERED RECTANGULAR  
MODIFIED BRILLIANT**  
Measurements **11.30 X 7.95 X 5.33 MM**

**PROPORTIONS**

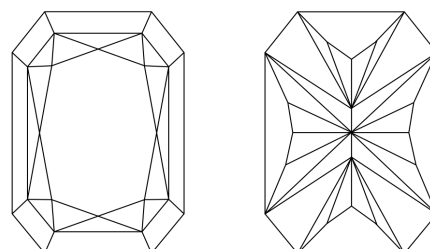


Sample Image Used

**GRADING RESULTS**

Carat Weight **4.15 CARATS**  
Color Grade **D**  
Clarity Grade **FLAWLESS**  
Cut Grade **EXCELLENT**

**CLARITY CHARACTERISTICS**



**KEY TO SYMBOLS**

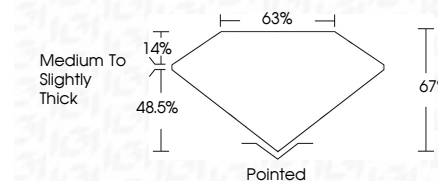
Red symbols indicate internal characteristics.  
Green symbols indicate external characteristics.

**COLOR**

D E F G H I J Faint Very Light Light

**CLARITY**

| FL       | IF                  | VS <sup>1-2</sup>           | VS <sup>1-2</sup>      | SI <sup>1-2</sup> | I <sup>1-3</sup> |
|----------|---------------------|-----------------------------|------------------------|-------------------|------------------|
| Flawless | Internally Flawless | Very Very Slightly Included | Very Slightly Included | Slightly Included | Included         |



**ADDITIONAL GRADING INFORMATION**

Polish **EXCELLENT**  
Symmetry **EXCELLENT**  
Fluorescence **NONE**  
Inscription(s) **IGI LG794697093**  
Comments: As Grown - No indication of post-growth treatment.  
This Laboratory Grown Diamond was created by High Pressure High Temperature (HPHT) growth process.  
Type II

**ADDITIONAL GRADING INFORMATION**

Polish **EXCELLENT**  
Symmetry **EXCELLENT**  
Fluorescence **NONE**  
Inscription(s) **IGI LG794697093**

Comments: As Grown - No indication of post-growth treatment.  
This Laboratory Grown Diamond was created by High Pressure High Temperature (HPHT) growth process.  
Type II



**IGI**



May 9, 2026  
IGI Report No **LG794697093**  
**CUT CORNERED RECT. MODIFIED BRILLIANT**  
**11.30 X 7.95 X 5.33 MM**  
Carat Weight **4.15 CARATS**  
Color Grade **D**  
Clarity Grade **FLAWLESS**  
Cut Grade **EXCELLENT**  
Depth **67%**  
Table **68%**  
Girdle **Medium to Slightly Thick**  
Culet **Pointed**  
Polish **EXCELLENT**  
Symmetry **EXCELLENT**  
Fluorescence **NONE**  
Inscription(s) **IGI LG794697093**  
Comments: As Grown - No indication of post-growth treatment.  
This Laboratory Grown Diamond was created by High Pressure High Temperature (HPHT) growth process.  
Type II