



ELECTRONIC COPY

LG794696993
Report verification at igi.org



May 15, 2026

IGI Report Number **LG794696993**

Description **LABORATORY GROWN DIAMOND**

Shape and Cutting Style **CUT CORNERED
RECTANGULAR MODIFIED
BRILLIANT**

Measurements **9.19 X 6.30 X 4.15 MM**

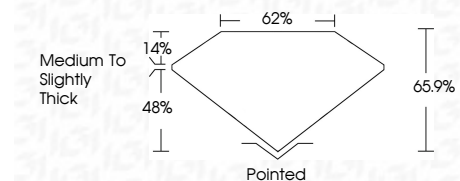
GRADING RESULTS

Carat Weight **2.06 CARATS**

Color Grade **D**

Clarity Grade **FLAWLESS**

Cut Grade **EXCELLENT**



ADDITIONAL GRADING INFORMATION

Polish **EXCELLENT**

Symmetry **EXCELLENT**

Fluorescence **NONE**

Inscription(s) **IGI LG794696993**

Comments: As Grown - No indication of post-growth treatment.

This Laboratory Grown Diamond was created by High Pressure High Temperature (HPHT) growth process. Type II



| | | | | | | | | | | | | | | | |
|--------------|---------------------------|---------------------------------------|-----------------------|-------------|--------|----------|-----------|----------|--------------|--------------------------|-----------|---|-----------|------|-----------------|
| May 15, 2026 | IGI Report No LG794696993 | CUT CORNERED RECT. MODIFIED BRILLIANT | 9.19 X 6.30 X 4.15 MM | 2.06 CARATS | D | FLAWLESS | EXCELLENT | 66.1% | 62% | Medium to Slightly Thick | Pointed | EXCELLENT | EXCELLENT | NONE | IGI LG794696993 |
| Color Grade | Clarity Grade | Cut Grade | Depth | Table | Girdle | Culet | Polish | Symmetry | Fluorescence | Inscription(s) | Comments: | As Grown - No indication of post-growth treatment. This Laboratory Grown Diamond was created by High Pressure High Temperature (HPHT) growth process. Type II | | | |

LABORATORY GROWN DIAMOND REPORT

May 15, 2026

IGI Report Number **LG794696993**

Description **LABORATORY GROWN DIAMOND**

Shape and Cutting Style **CUT CORNERED RECTANGULAR
MODIFIED BRILLIANT**

Measurements **9.19 X 6.30 X 4.15 MM**

GRADING RESULTS

Carat Weight **2.06 CARATS**

Color Grade **D**

Clarity Grade **FLAWLESS**

Cut Grade **EXCELLENT**

ADDITIONAL GRADING INFORMATION

Polish **EXCELLENT**

Symmetry **EXCELLENT**

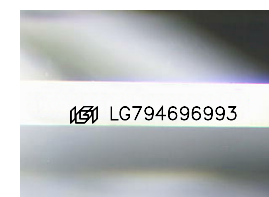
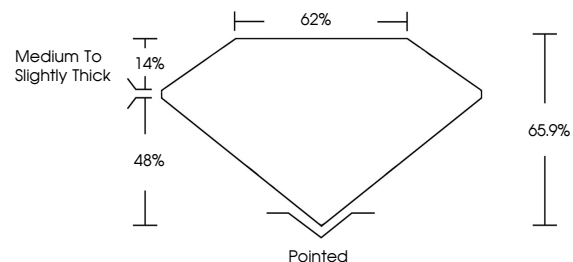
Fluorescence **NONE**

Inscription(s) **IGI LG794696993**

Comments: As Grown - No indication of post-growth treatment.

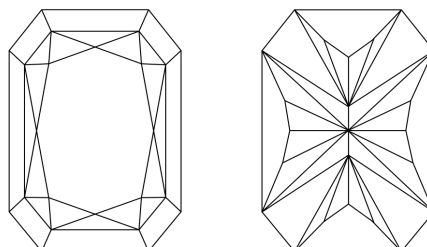
This Laboratory Grown Diamond was created by High Pressure High Temperature (HPHT) growth process. Type II

PROPORTIONS



Sample Image Used

CLARITY CHARACTERISTICS



KEY TO SYMBOLS

Red symbols indicate internal characteristics.
Green symbols indicate external characteristics.

COLOR

D E F G H I J Faint Very Light Light

CLARITY

| | | | | | |
|----------|---------------------|-----------------------------|------------------------|-------------------|------------------|
| FL | IF | VS ¹⁻² | VS ¹⁻² | SI ¹⁻² | I ¹⁻³ |
| Flawless | Internally Flawless | Very Very Slightly Included | Very Slightly Included | Slightly Included | Included |

